



ROYAL FOAM  
*Factory*

# Stucco Fences

*Engineered for durability*  
*Designed for impact*

From classic textures to bold modern finishes — our stucco fences are built to impress and engineered to last. Browse the catalog and find the perfect match for your next project.

# Welcome

## *to our Product Catalog*

We're pleased to introduce you to our exclusive line of stucco fence systems — engineered for visual impact, structural efficiency, and long-term performance.

Royal Foam is a US-based manufacturer specializing in high-quality architectural foam products. With over 25 years of experience in the industry, we provide innovative solutions for developers, architects, contractors, and design firms nationwide. Our stucco fences are designed to meet the demands of both commercial and residential projects — combining aesthetic flexibility with cost-effective installation and durability.

What sets us apart is our commitment to customization, precision manufacturing, and outstanding service. All of our products are lightweight, weather-resistant, and delivered pre-assembled to simplify the building process. From texture and color to form and finish, we work closely with our clients to ensure every product aligns with their project goals and brand identity.

— *Team Royal Foam*





# *Contents*

04	Royal Foam Fences — The Market Leader
05	Royal Foam Stucco Fence Manufacturing & Installation
07	Product Characteristics
08	Design Collection
40	Piers & Caps
41	Wall Capitals
42	Faux Wood Textures
43	Gallery
49	Technical Installation Manual
56	Expert Report: Fire Safety of Royal Foam Fences (Class A)
58	Expert Report on the Acoustic Performance of Royal Foam Fences
60	Polyurea Hardcoat
62	20 Year Limited Warranty: Faux Stone & Faux Brick
65	Installation & Safety Guidelines
66	Technical Drawings
68	Nationwide Excellence: Royal Foam Stucco Wall Fence

# *Royal Foam Fences — The Market Leader*

## **A Product Beyond Comparison**

Royal Foam, a US-based manufacturer, has been producing architectural foam products for over 25 years, delivering innovative solutions for developers, architects, contractors, and design firms nationwide. Today, we proudly present our flagship achievement — next-generation stucco and decorative fences that combine aesthetics, durability, and cost efficiency. This is not just a fence. It is an architectural element that emphasizes prestige, enhances the environment, and serves for decades.

## **Key Advantages of Royal Foam Fences**

### **Versatility and Adaptability**

- Easily adapts to any terrain and surroundings.
- Panels can be adjusted to any width for project-specific needs.
- Combines seamlessly with ornamental metal and other architectural elements.
- Ideal for both residential and commercial applications.

### **Strength and Durability**

- Reinforced with galvanized steel for superior strength.
- Withstands extreme climates: from -40° to +140°F.
- Certified wind resistance: up to 140 mph sustained and 175 mph gusts, meeting Miami-Dade County standards.
- Impact resistant: resists damage from baseballs, golf balls, rocks, and hail.

### **Design and Aesthetics**

- Authentic, stone, wood and brick-like appearance.
- Wide palette of textures and colors.
- Full customization available — from texture to form and finish.
- Integrates elegantly with ornamental gates and architectural accents.

### **Protection and Comfort**

- Superior sound barrier: blocks up to 98% of direct noise with an STC value 35–40+.
- Fade resistant: UV-12 stabilizers ensure vibrant color for decades.
- Graffiti resistant: easily cleaned with high-pressure washing.

### **Eco-Friendliness**

- Contains up to 25% recycled EPS polystyrene.
- Manufactured with no deforestation.
- Fully aligned with modern eco-friendly standards.

### **Convenience and Cost Efficiency**

- Delivered pre-assembled for simplified installation.
- Maintenance-free: no painting, staining, or repair required.
- Long-term warranty: 20 years, with lifetime coverage on select products.

## **Why Royal Foam is the Best Choice**

1. Cutting-edge technology: innovative materials, reinforced steel, and premium finishing.
2. Superior aesthetics: every fence looks like a high-end faux stone or faux brick wall.
3. Cost savings: faster and more affordable installation compared to traditional materials.
4. Durability: resistant to wind, sun, frost, and vandalism.
5. Flexibility: suitable for private residences, commercial facilities, and municipal projects.
6. Prestige: enhances the status and value of any property.

## **Intellectual Property Protection**

All Royal Foam technologies are patented and protected by intellectual property rights. This ensures that every fence is not only unique in design and performance but also legally safeguarded as an exclusive innovation. By choosing Royal Foam, clients invest in solutions that cannot be replicated by competitors, guaranteeing exclusivity and long-term market value.



# *Royal Foam stucco fence manufacturing & installation*

Royal Foam stucco fences feature a high-density Expanded Polystyrene (EPS) core for structural strength, insulation, and soundproofing. This core is coated with impact-resistant urethane and a UV-stable acrylic finish to prevent fading, cracking, and moisture damage.

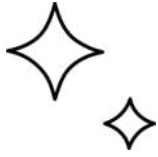
Installation starts with precise site marking, ground leveling, and the setup of wooden or metal formwork. EPS inserts are placed at exact post locations. Concrete (3,000 PSI) is poured, fully encasing the EPS, and compacted using vibration tools for maximum strength. After curing, the formwork and inserts are removed, creating clean post sockets.

Galvanized steel posts are inserted through factory-cut panel openings and anchored into the sockets with additional concrete. Temporary bracing ensures alignment until the concrete sets.

This process reduces labor by up to 40%, shortens installation time, and eliminates the need for heavy machinery. Modular panels span 6–8 feet, offering a fast, precise, and cost-efficient solution for commercial, residential, and municipal projects.



# Royal Foam Stucco Wall Fence



## Elegant Appearance

Stylish stucco and faux wood design that enhances any property



## No Maintenance Costs

Doesn't require repainting, sealing, or constant repairs



## 20-Year Transferable Warranty

Long-lasting quality guaranteed



## Class A Fire Rating

Highest level of fire resistance for peace of mind



## Weather Resistant

Withstands rain, sun, temperature changes, and storm impact



## Code Compliant

Meets modern safety and building regulations

# VS



## Attractive but Short-Lived

Looks nice initially, but degrades faster



## High Upkeep Costs

Needs frequent repainting and crack repairs



## 10-Year Lifespan

Requires replacement or major restoration twice as often



## Lower Fire Resistance

Burns more easily, increasing risks



## Vulnerable to Cracks & Stains

Prone to weather damage over time



## Not Always Code Approved

May not pass updated construction standards

# Traditional Stucco Wall Fence



# Product characteristics



## Eco-friendly Material

Adopted full-water foaming system and waterbased paint, all the products meet the EU SGS-SVHC standards, VOC content lower than the EU and American standards.



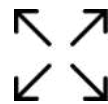
## Insect and Mildew Resistance

Low water absorption. Could not get moldy even if put in the water for a long time; also can effectively prevent the damage of termites and insects to products.



## Customizable

Customizing customers' personalized products according to the requirements.



## Dimensional Stability

Small thermal expansion and cold contraction, excellent dimensional stability.



## Durability

Subsequently formed polyurethane and the previously formed waterborne film can be perfectly adhered together without peeling off and discoloration, same life as the building



## Profiling Performance

Advanced molding technology ensures the surface accurately replicates natural stone textures — with realistic relief, depth, and detail for a premium, authentic look.

The Royal Foam Stucco Wall Fence is designed to combine aesthetic appeal with long-term performance, making it a versatile solution for residential and commercial projects. Its structure features a durable EPS foam core, reinforced with advanced coatings and finished with decorative stucco surfaces that replicate the look of stone, brick, or faux wood. This creates a fence system that is not only visually striking but also lightweight, easy to handle, and highly adaptable to different architectural styles.

One of the key advantages of the Stucco Wall Fence is its balance of strength and efficiency. Unlike traditional masonry, it does not require heavy foundations or lengthy installation. Panels are modular and can be quickly assembled on site, reducing labor costs and timelines without compromising durability. The system resists cracking, fading, and weathering, ensuring that the fence maintains its original appearance for years with minimal maintenance.

In addition to its practical benefits, the fence also supports design flexibility. Surface finishes can be customized to match a wide range of textures and colors, allowing seamless integration into existing landscapes or new developments. Whether the goal is to create a refined residential boundary, a secure perimeter for public spaces, or a stylish accent for commercial properties, the Royal Foam Stucco Wall Fence delivers both function and design excellence.

# Stucco Wall Fence

01



The sample is an example, and a **CUSTOM VERSION CAN BE MADE IN** any size with any design modifications.

Texture Used: CASTLE-STYLE MASONRY CA-FSP 7643



175 mph  
Wind Resistance



Does  
Not Rot



Not Eaten by  
Insects or Birds



UV  
Resistant



Cold  
Resistant

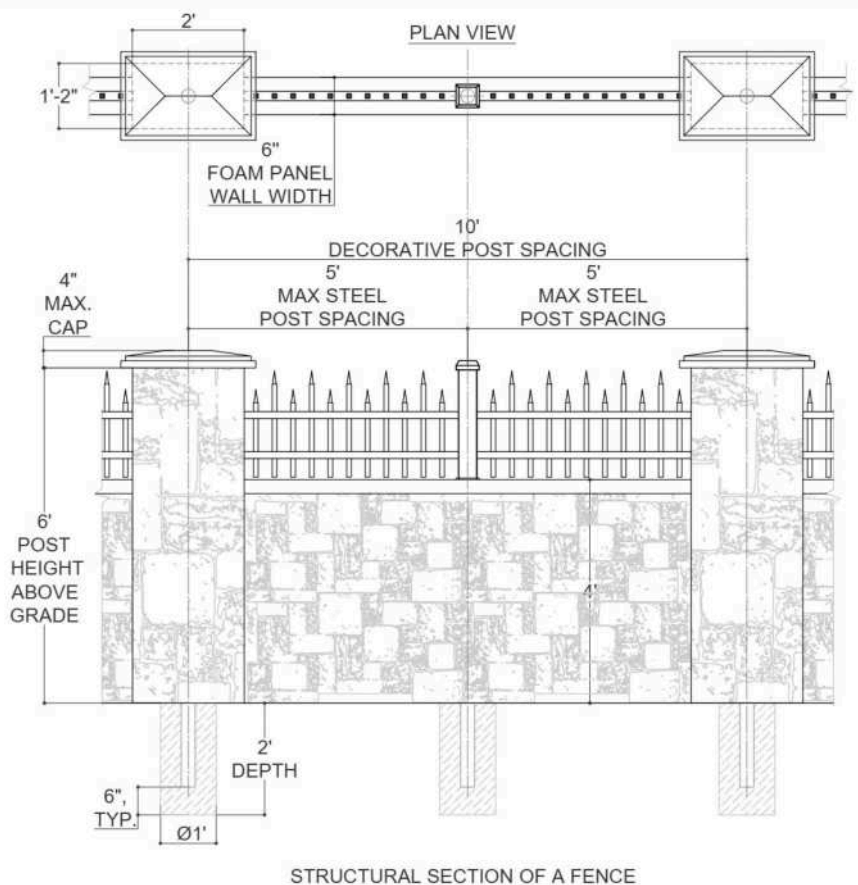


Class A  
Fire Rating

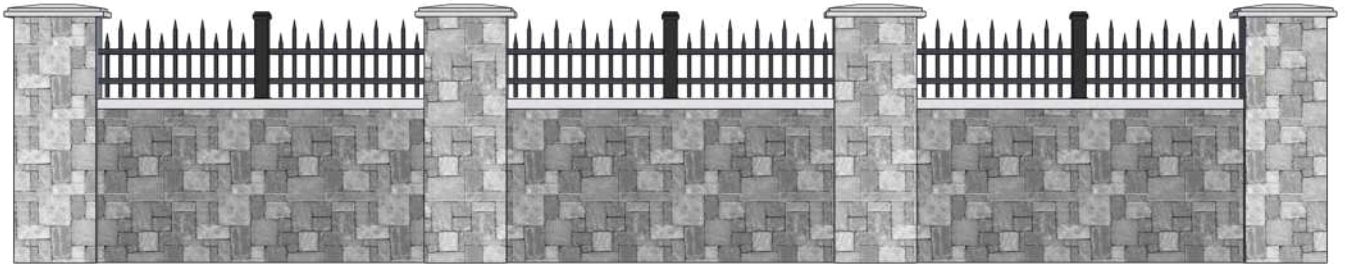


Superior sound  
barrier

8







ASSOL-STYLE MASONRY  
AS-FSP 7060



CASTLE-STYLE MASONRY  
CA-FSP 7643



DRY STONE WALLING  
STYLE DS-FSP 9152



RIVER ROCK-STYLE  
MASONRY RR-FSP 6087



RONDO-STYLE MASONRY  
RO-FSP 7503- 6159



RUBLE-STYLE MASONRY  
RU-FSP 0009



RUSTIC-STYLE MASONRY  
RS-FSP 9117- 6200



SHAHRIAR-STYLE  
MASONRY SH-FSP 9093



PLATEAU-STYLE  
MASONRY PS-FSP 6094



SLAB-STYLE MASONRY  
SL-FSP 9131



OLD BRICK-STYLE  
MASONRY OB-FSP 0027



RUSTIC BRICK-STYLE  
MASONRY RB-FSP 9112

## Legacy Fortress

This impressive faux stone barrier radiates everlasting strength and modern reliability. Its rugged, textured façade **symbolizes** permanence, while simple metal accents add a touch of elegance. It's **built for endurance** and surrounds your residence with honor, projecting authority while uniting noble style with steadfast protection for you and your loved ones.



# Stucco Wall Fence

02



The sample is an example, and a **CUSTOM VERSION CAN BE MADE IN** any size with any design modifications.

Texture Used: SHAHRIAR-STYLE MASONRY SH-FSP 9088



175 mph  
Wind Resistance



Does  
Not Rot



Not Eaten by  
Insects or Birds



UV  
Resistant



Cold  
Resistant

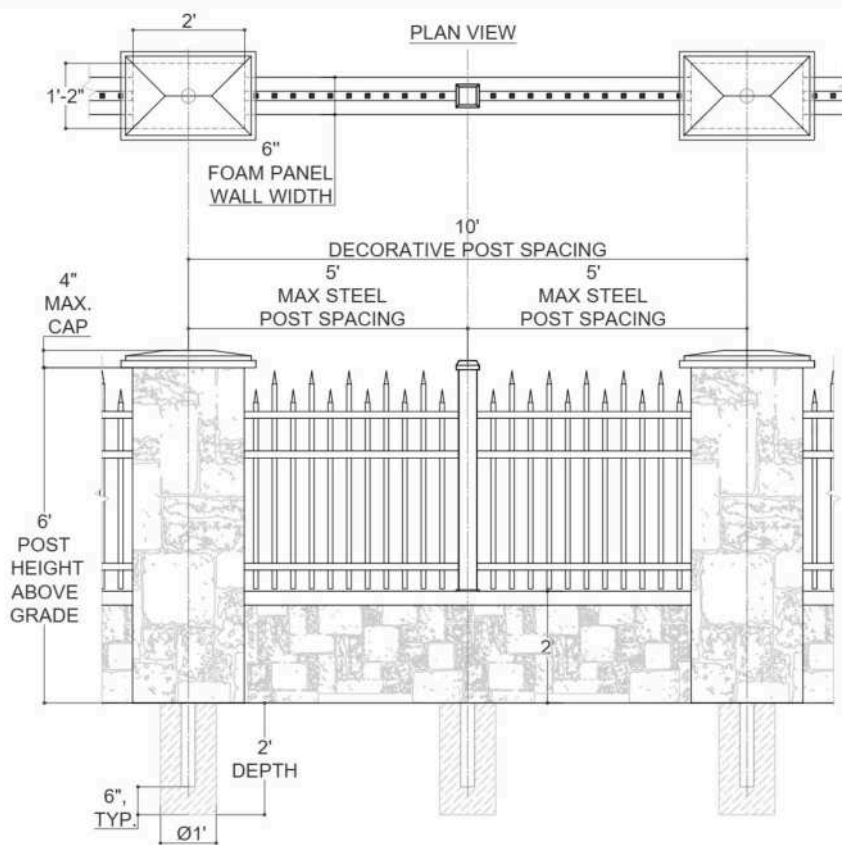


Class A  
Fire Rating



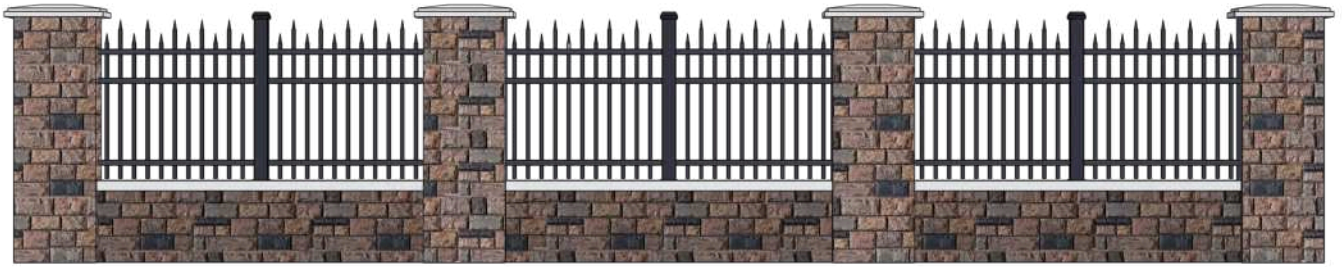
Superior sound  
barrier

10



STRUCTURAL SECTION OF A FENCE





ASSOL-STYLE MASONRY  
AS-FSP 7081



CASTLE-STYLE MASONRY  
CA-FSP 9078



DRY STONE WALLING  
STYLE DS-FSP 9098



RIVER ROCK-STYLE  
MASONRY RR-FSP 9092



RONDO-STYLE MASONRY  
RO-FSP 9105- 6060



RUBLE-STYLE MASONRY  
RU-FSP 0038



RUSTIC-STYLE MASONRY  
RS-FSP 7650



SHAHRIAR-STYLE  
MASONRY SH-FSP 9088



PLATEAU-STYLE MASONRY  
PS-FSP 6094-6060



SLAB-STYLE MASONRY  
SL-FSP 6149-9084



OLD BRICK-STYLE  
MASONRY OB-FSP 0027



RUSTIC BRICK-STYLE  
MASONRY RB-FSP 6034

## Timeless Balance

Soft stone tones combine with elegant **metal details** to create a fence that feels both stylish and welcoming. More than just protection, it adds warmth and harmony to your home, giving you a private retreat where family and friends feel safe and comfortable. **Its flowing design** brings a touch of elegance to any setting, while strong, durable craftsmanship guarantees reliability for decades. **If you value beauty as much as security**, this fence is the perfect choice to surround your home with charm, safety, and long-lasting peace of mind.



# Stucco Wall Fence

03



The sample is an example, and a **CUSTOM VERSION CAN BE MADE IN** any size with any design modifications.

Texture Used: BARNWOOD STYLE BW-FWP 9110



**175 mph**  
Wind Resistance



**Does**  
Not Rot



**Not Eaten by**  
Insects or Birds



**UV**  
Resistant



**Cold**  
Resistant

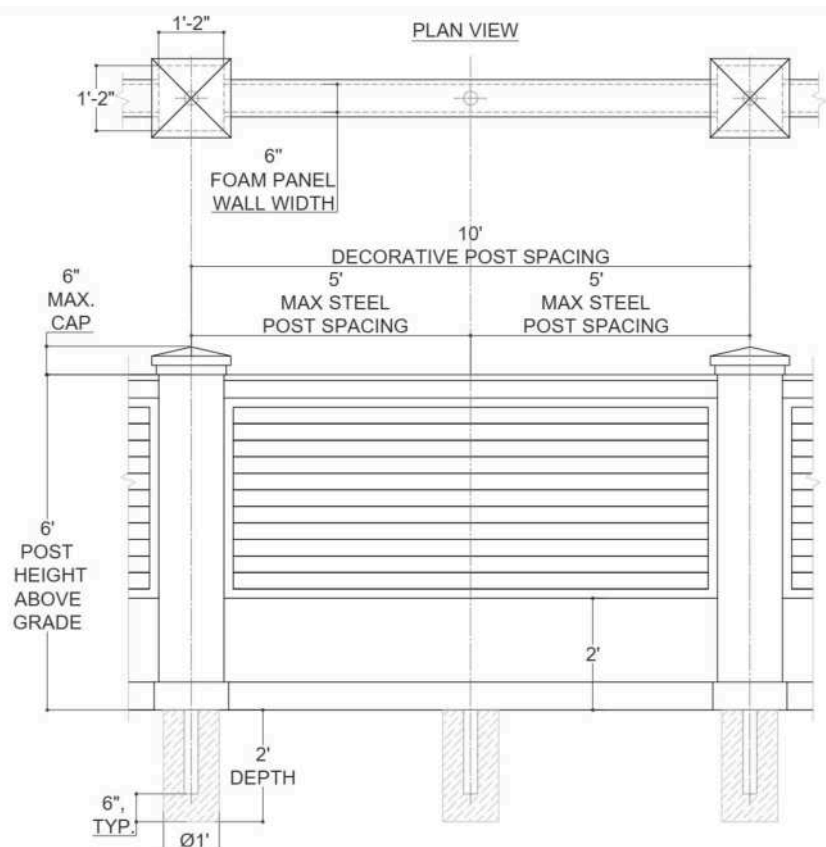


**Class A**  
Fire Rating



**Superior sound**  
barrier

12







ASSOL-STYLE MASONRY  
AS-FSP 7052



CASTLE-STYLE MASONRY  
CA-FSP 7534



DRY STONE WALLING  
STYLE DS-FSP 9111



RIVER ROCK-STYLE  
MASONRY RR-FSP 6087



RONDO-STYLE MASONRY  
RO-FSP 6100- 9080



RUBLE-STYLE MASONRY  
RU-FSP 9082



RUSTIC-STYLE MASONRY  
RS-FSP 9097



SHAHRIAR-STYLE  
MASONRY SH-FSP 6046



PLATEAU-STYLE  
MASONRY PS-FSP 7060



SLAB-STYLE MASONRY  
SL-FSP 6149-9084



OLD BRICK-STYLE  
MASONRY OB-FSP 0027



RUSTIC BRICK-STYLE  
MASONRY RB-FSP 6040

## Modern Haven

A refined mix of smooth stucco and faux wood transforms your outdoor space into a stylish yet cozy retreat. **Designed for both relaxation and entertaining**, it enhances everyday living with ease. Resilient, low-maintenance, and **exquisite**, it embodies modern elegance while transforming daily life into a **sanctuary of comfort**.

# Stucco Wall Fence

04



The sample is an example, and a **CUSTOM VERSION CAN BE MADE IN** any size with any design modifications.



175 mph  
Wind Resistance



Does  
Not Rot



Not Eaten by  
Insects or Birds



UV  
Resistant



Cold  
Resistant



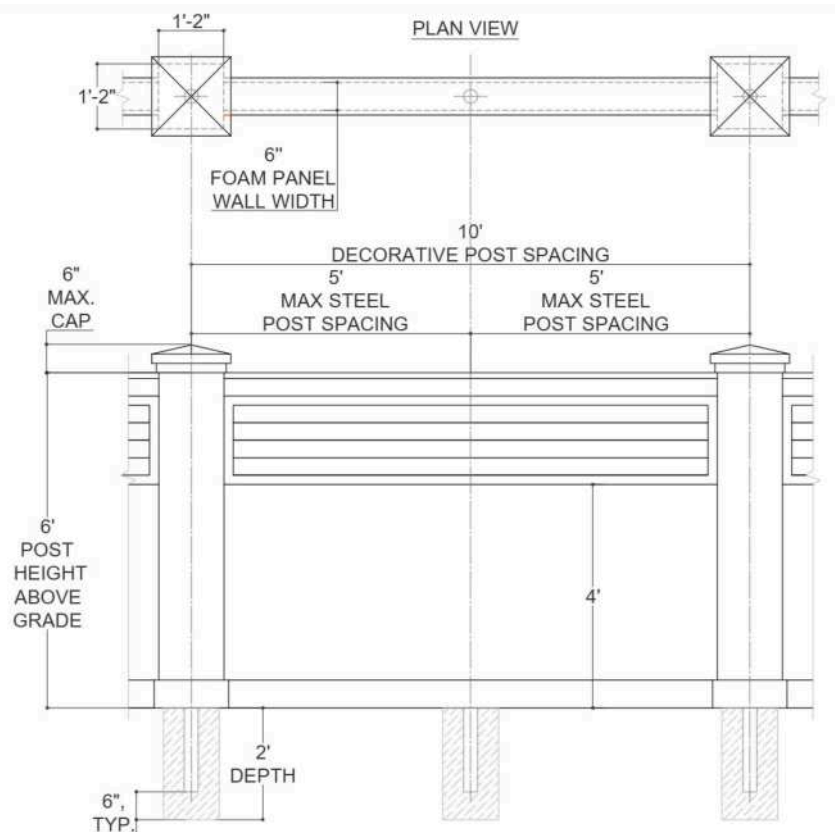
Class A  
Fire Rating



Superior sound  
barrier

14

Texture Used: RUSTIC BRICK-STYLE MASONRY RB-FSP 7004  
and ROUGH SAWN STYLE RS-FWT 7521 for faux wood



STRUCTURAL SECTION OF A FENCE





ASSOL-STYLE MASONRY  
AS-FSP 9092



CASTLE-STYLE MASONRY  
CA-FSP 7081



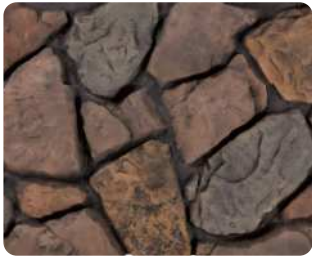
DRY STONE WALLING  
STYLE DS-FSP 9117



RIVER ROCK-STYLE  
MASONRY RR-FSP 6087



RONDO-STYLE MASONRY  
RO-FSP 6100- 9080



RUBLE-STYLE MASONRY  
RU-FSP 9082



RUSTIC-STYLE MASONRY  
RS-FSP 9097



SHAHRIAR-STYLE  
MASONRY SH-FSP 7025



PLATEAU-STYLE MASONRY  
PS-FSP 9117-9092



SLAB-STYLE MASONRY  
SL-FSP 9112



OLD BRICK-STYLE  
MASONRY OB-FSP 6009



RUSTIC BRICK-STYLE  
MASONRY RB-FSP 7004

## Metropolitan Grace

Simple brick patterns paired with polished faux wood accents give this fence a distinctly modern character. Perfect for urban residences, it **unites resilience with polish**, creating a protective yet **approachable enclosure**. Durable and stylish, it elevates city living, offering privacy and a **touch of metropolitan sophistication**.

# Stucco Wall Fence

05



The sample is an example, and a **CUSTOM VERSION CAN BE MADE IN** any size with any design modifications.

Texture Used: RUSTIC-STYLE MASONRY RS-FSP 9110-6151



175 mph  
Wind Resistance



Does  
Not Rot



Not Eaten by  
Insects or Birds



UV  
Resistant



Cold  
Resistant

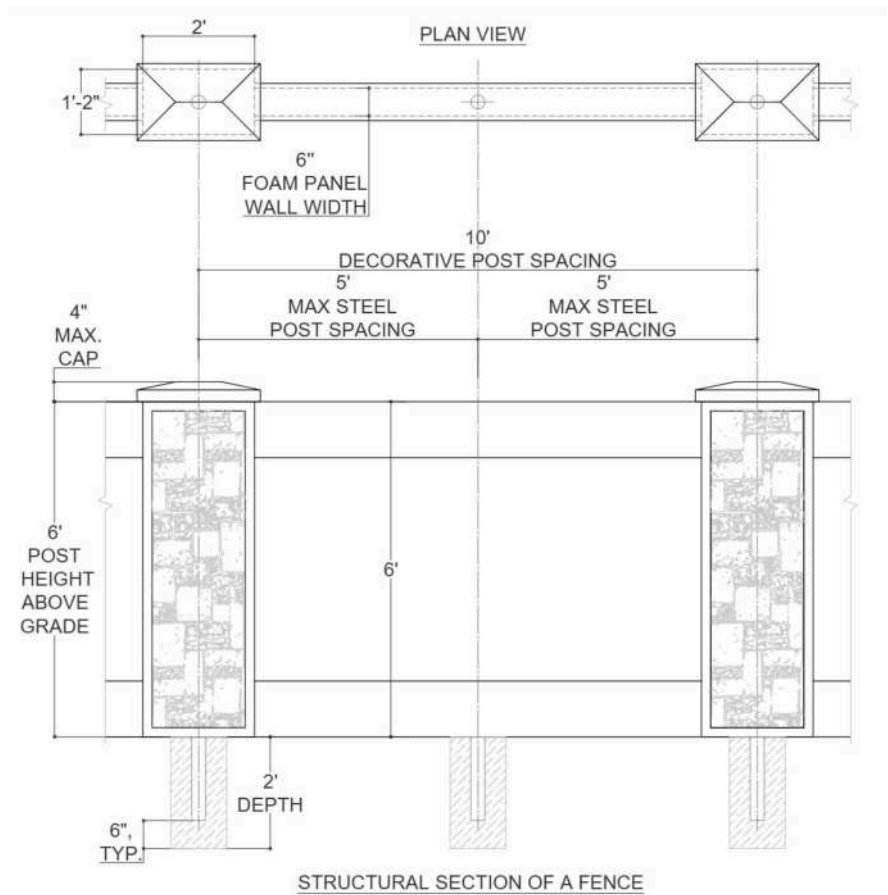


Class A  
Fire Rating



Superior sound  
barrier

16







ASSOL-STYLE MASONRY  
AS-FSP 7031



CASTLE-STYLE MASONRY  
CA-FSP 7534



DRY STONE WALLING  
STYLE DS-FSP 9126



RIVER ROCK-STYLE  
MASONRY RR-FSP 9092



RONDO-STYLE MASONRY  
RO-FSP 7031- 7018



RUBLE-STYLE MASONRY  
RU-FSP 0009



RUSTIC-STYLE MASONRY  
RS-FSP 9110- 6151



SHAHRIAR-STYLE  
MASONRY SH-FSP 9088



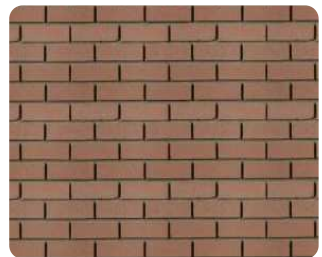
PLATEAU-STYLE MASONRY  
PS-FSP 9110-6151



SLAB-STYLE MASONRY  
SL-FSP 9117



OLD BRICK-STYLE  
MASONRY OB-FSP 9117



RUSTIC BRICK-STYLE  
MASONRY RB-FSP 6060

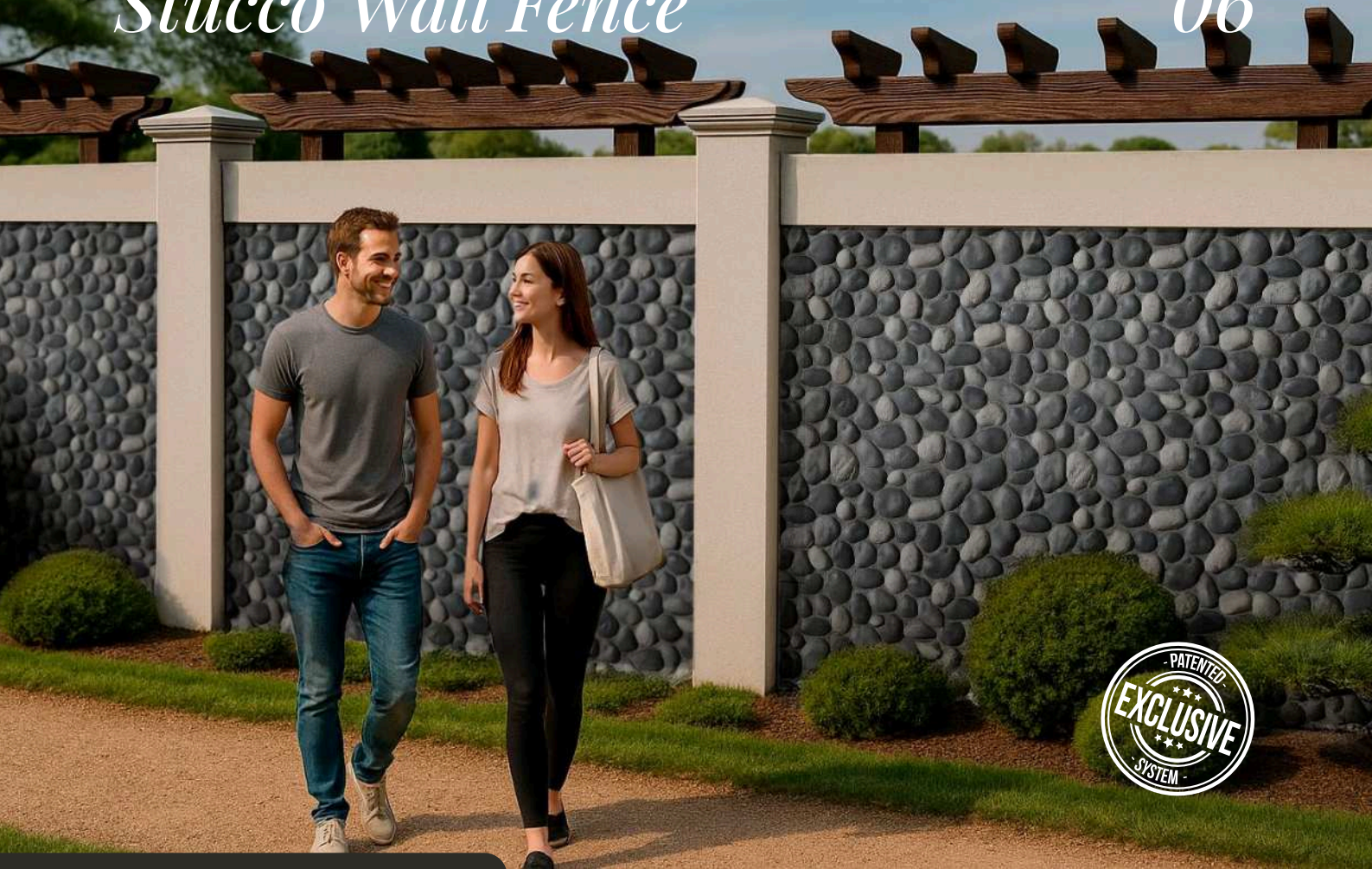
## Stone Serenity

Faux rock patterns framed by crisp stucco lines create a bold yet calming **impression**. **Blending effortlessly with open landscapes**, it delivers security without losing natural warmth. Built to last, it transforms any property into a restful refuge, combining rustic charm with unwavering durability and **graceful design**.



# Stucco Wall Fence

06



The sample is an example, and a **CUSTOM VERSION CAN BE MADE IN** any size with any design modifications.

Texture Used: RIVER ROCK-STYLE MASONRY RR-FSP 6087



**175 mph**  
Wind Resistance



**Does**  
Not Rot



**Not Eaten by**  
Insects or Birds



**UV**  
Resistant



**Cold**  
Resistant

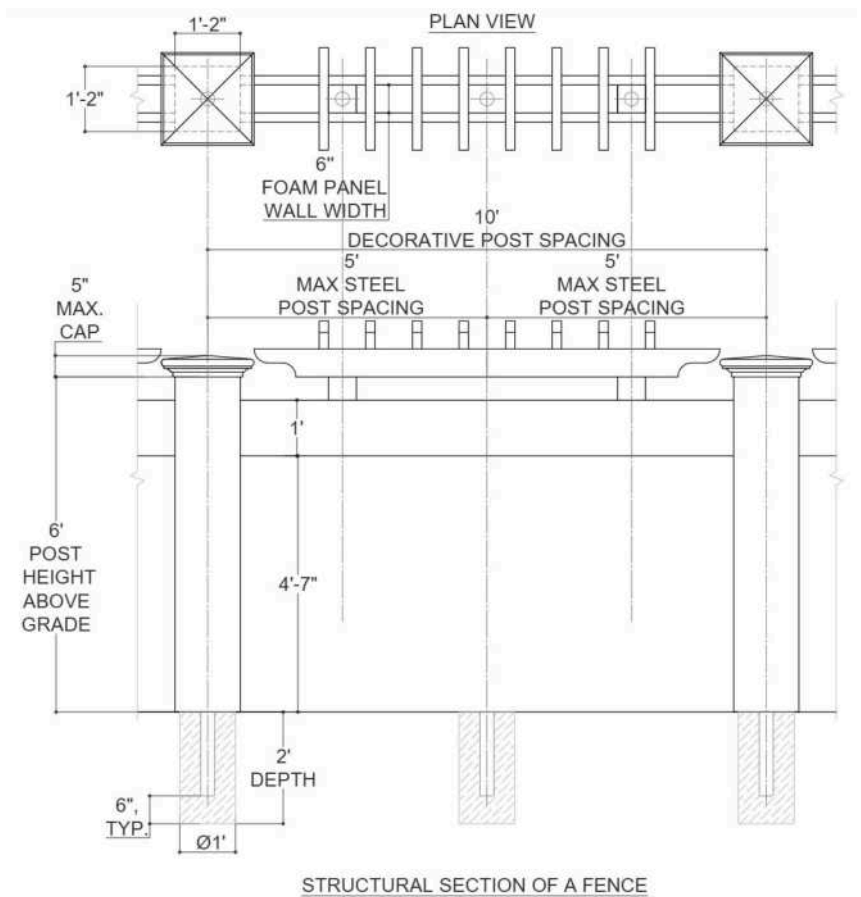


**Class A**  
Fire Rating

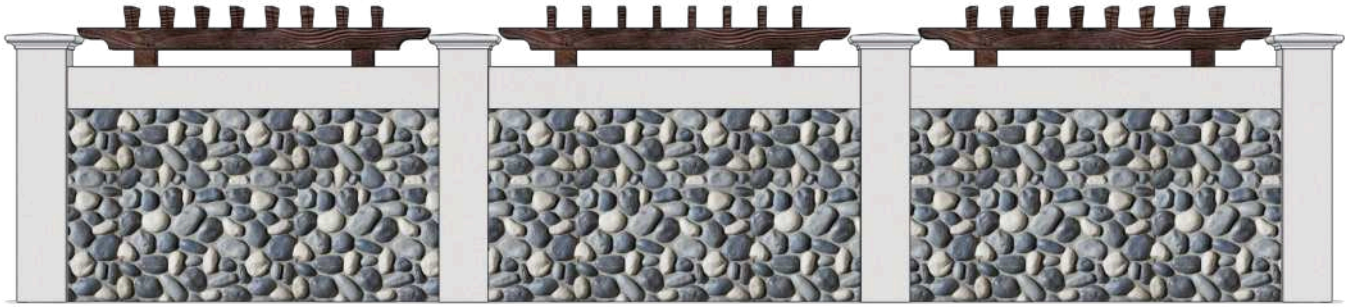


**Superior sound**  
barrier

18







ASSOL-STYLE MASONRY  
AS-FSP 7038



CASTLE-STYLE MASONRY  
CA-FSP 7629



DRY STONE WALLING  
STYLE DS-FSP 9152



RIVER ROCK-STYLE  
MASONRY RR-FSP 6087



RONDO-STYLE MASONRY  
RO-FSP 6151- 6278



RUBLE-STYLE MASONRY  
RU-FSP 9082



RUSTIC-STYLE MASONRY  
RS-FSP 9117- 6200



SHAHRIAR-STYLE  
MASONRY SH-FSP 9093



PLATEAU-STYLE  
MASONRY PS-FSP 6094



SLAB-STYLE MASONRY  
SL-FSP 9131



OLD BRICK-STYLE  
MASONRY OB-FSP 7715



RUSTIC BRICK-STYLE  
MASONRY RB-FSP 9112

## Garden Tranquility

Blending faux riverstone, light stucco, and delicate faux wood accents, this fence is easily **compatible with your garden**, creating a flawless connection between home and landscape. Perfect for lush yards, it brings calm beauty with reliable protection. Durable yet **delicate**, it **turns any outdoor area into a serene, stylish retreat you'll enjoy every day**.



# Stucco Wall Fence

07



The sample is an example, and a **CUSTOM VERSION CAN BE MADE IN** any size with any design modifications.

Texture Used: RUBLE-STYLE MASONRY RU-FSP 0009



**175 mph**  
Wind Resistance



**Does**  
Not Rot



**Not Eaten by**  
Insects or Birds



**UV**  
Resistant



**Cold**  
Resistant

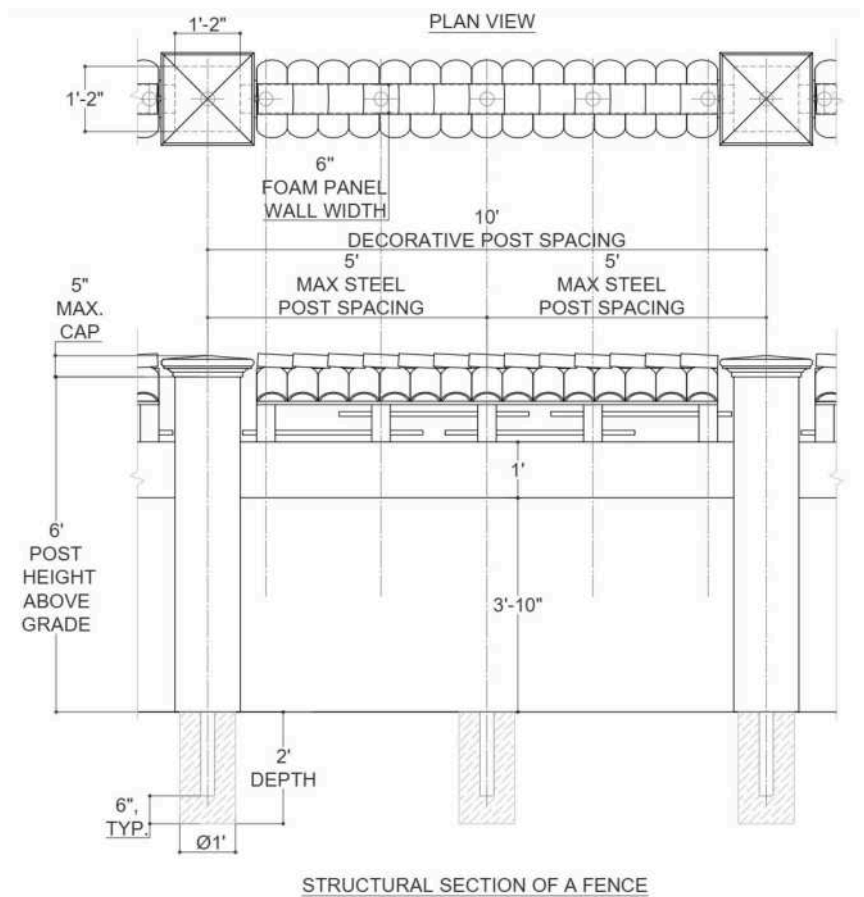


**Class A**  
Fire Rating

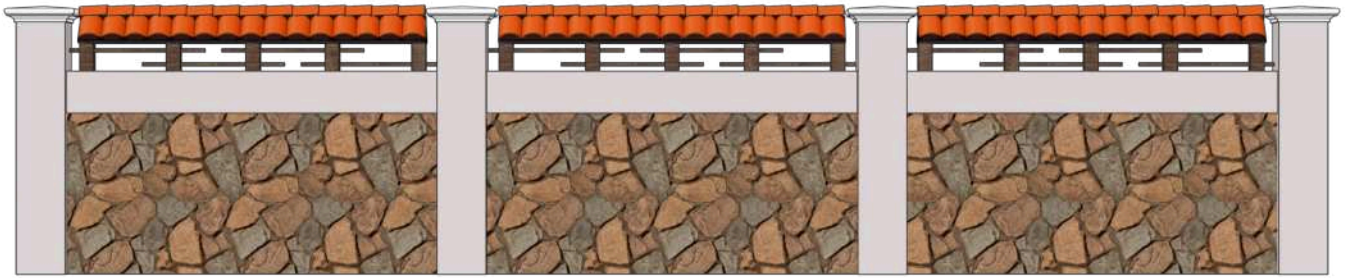


**Superior sound**  
barrier

20







ASSOL-STYLE MASONRY  
AS-FSP 7052



CASTLE-STYLE MASONRY  
CA-FSP 9078



DRY STONE WALLING  
STYLE DS-FSP 9111



RIVER ROCK-STYLE  
MASONRY RR-FSP 6087



RONDO-STYLE MASONRY  
RO-FSP 7081- 7079



RUBLE-STYLE MASONRY  
RU-FSP 0009



RUSTIC-STYLE MASONRY  
RS-FSP 7650



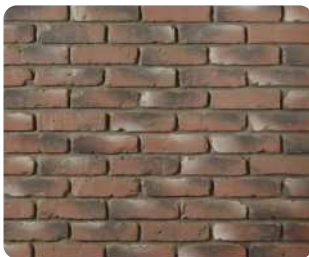
SHAHRIAR-STYLE  
MASONRY SH-FSP 6046



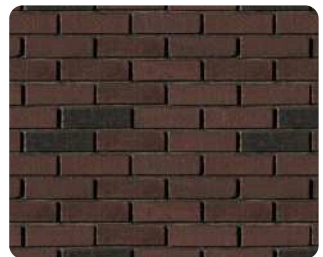
PLATEAU-STYLE MASONRY  
PS-FSP 6094-6060



SLAB-STYLE MASONRY  
SL-FSP 6149-9084



OLD BRICK-STYLE  
MASONRY OB-FSP 9080



RUSTIC BRICK-STYLE  
MASONRY RB-FSP 6034

## Rustic Haven

Earthy textures and warm tones make this fence a natural extension of the countryside. Strong but still welcoming, it protects while preserving rural charm. Its classic aesthetic celebrates tradition, offering **dependable durability and comfort** to family estates where both reliability and **homely beauty** are essential.



# Stucco Wall Fence

08



The sample is an example, and a **CUSTOM VERSION CAN BE MADE IN** any size with any design modifications.

Texture Used: DRY STONE WALLING STYLE DS-FSP 9126



175 mph  
Wind Resistance



Does  
Not Rot



Not Eaten by  
Insects or Birds



UV  
Resistant



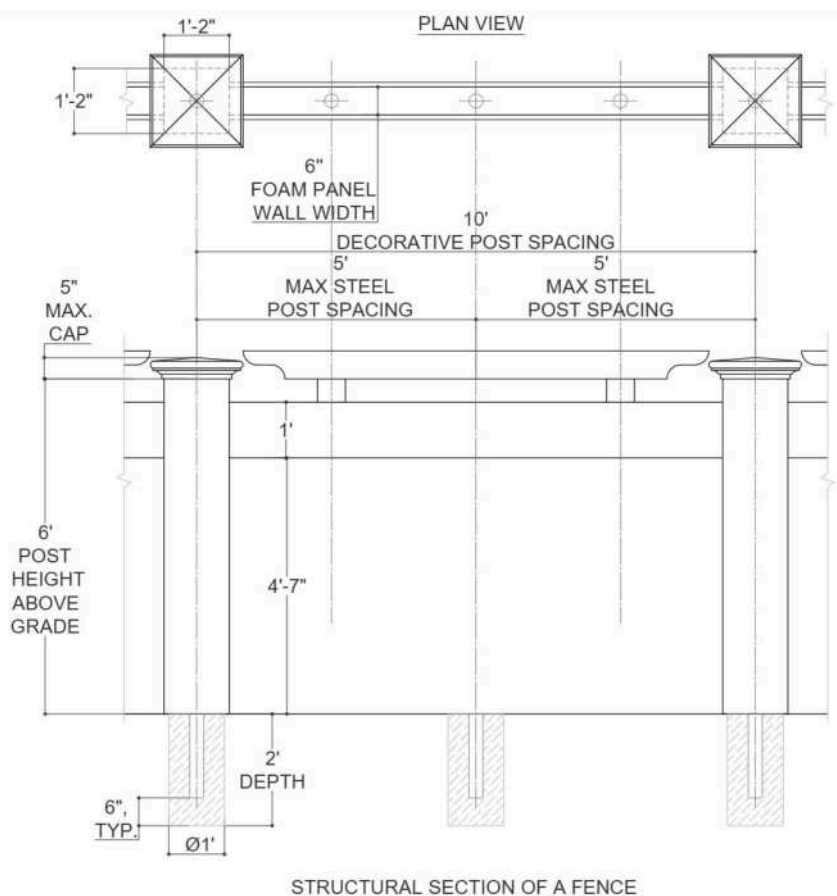
Cold  
Resistant



Class A  
Fire Rating



Superior sound  
barrier







ASSOL-STYLE MASONRY  
AS-FSP 9116



CASTLE-STYLE MASONRY  
CA-FSP 7643



DRY STONE WALLING  
STYLE DS-FSP 9126



RIVER ROCK-STYLE  
MASONRY RR-FSP 9092



RONDO-STYLE MASONRY  
RO-FSP 7503- 6159



RUBLE-STYLE MASONRY  
RU-FSP 9152



RUSTIC-STYLE MASONRY  
RS-FSP 9090



SHAHRIAR-STYLE  
MASONRY SH-FSP 6277



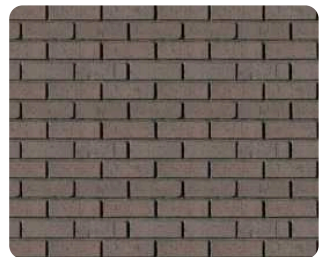
PLATEAU-STYLE  
MASONRY PS-FSP 7060



SLAB-STYLE MASONRY  
SL-FSP 9089



OLD BRICK-STYLE  
MASONRY OB-FSP 0027



RUSTIC BRICK-STYLE  
MASONRY RB-FSP 6040

## Classic Heritage

This traditional fence highlights timeless craftsmanship and lasting reliability. Its enduring design shows architectural legacy, while the robust structure **guarantees strong** protection. Perfect for heritage-style homes, it combines strength and elegance, providing a refined boundary that **honors tradition while meeting the needs of up-to-date living.**



# Stucco Wall Fence

09



The sample is an example, and a **CUSTOM VERSION CAN BE MADE IN** any size with any design modifications.

Texture Used: RUSTIC BRICK-STYLE MASONRY RB-FSP 6060



175 mph  
Wind Resistance



Does  
Not Rot



Not Eaten by  
Insects or Birds



UV  
Resistant



Cold  
Resistant

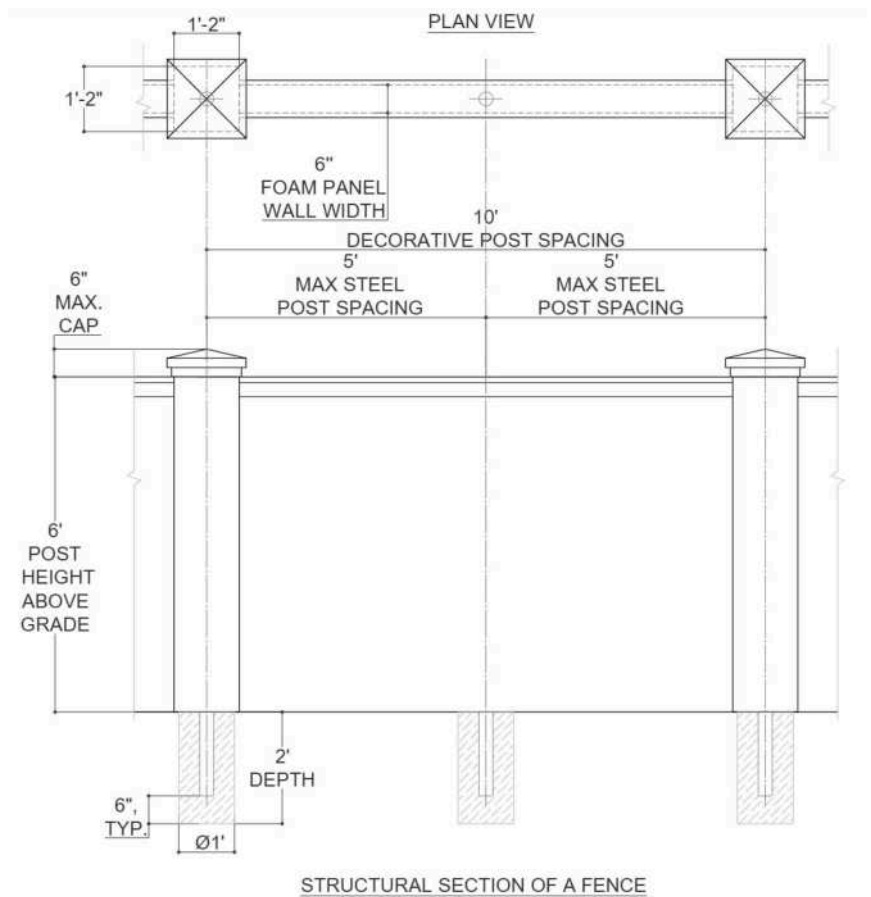


Class A  
Fire Rating

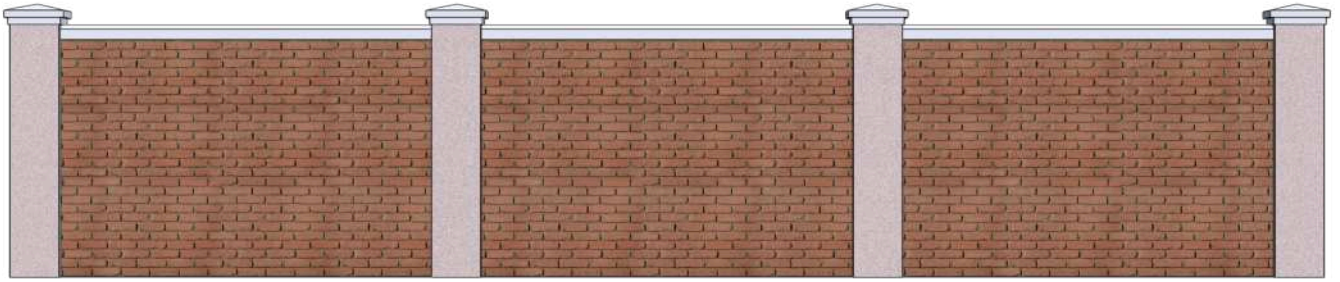


Superior sound  
barrier

24







ASSOL-STYLE MASONRY  
AS-FSP 6095



CASTLE-STYLE MASONRY  
CA-FSP 7081



DRY STONE WALLING  
STYLE DS-FSP 9117



RIVER ROCK-STYLE  
MASONRY RR-FSP 9143



RONDO-STYLE MASONRY  
RO-FSP 9105- 6060



RUBLE-STYLE MASONRY  
RU-FSP 0009



RUSTIC-STYLE MASONRY  
RS-FSP 9097



SHAHRIAR-STYLE  
MASONRY SH-FSP 7025



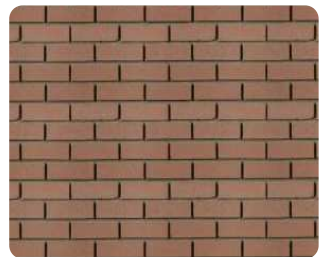
PLATEAU-STYLE MASONRY  
PS-FSP 9117-9092



SLAB-STYLE MASONRY  
SL-FSP 9112



OLD BRICK-STYLE  
MASONRY OB-FSP 0027



RUSTIC BRICK-STYLE  
MASONRY RB-FSP 6060

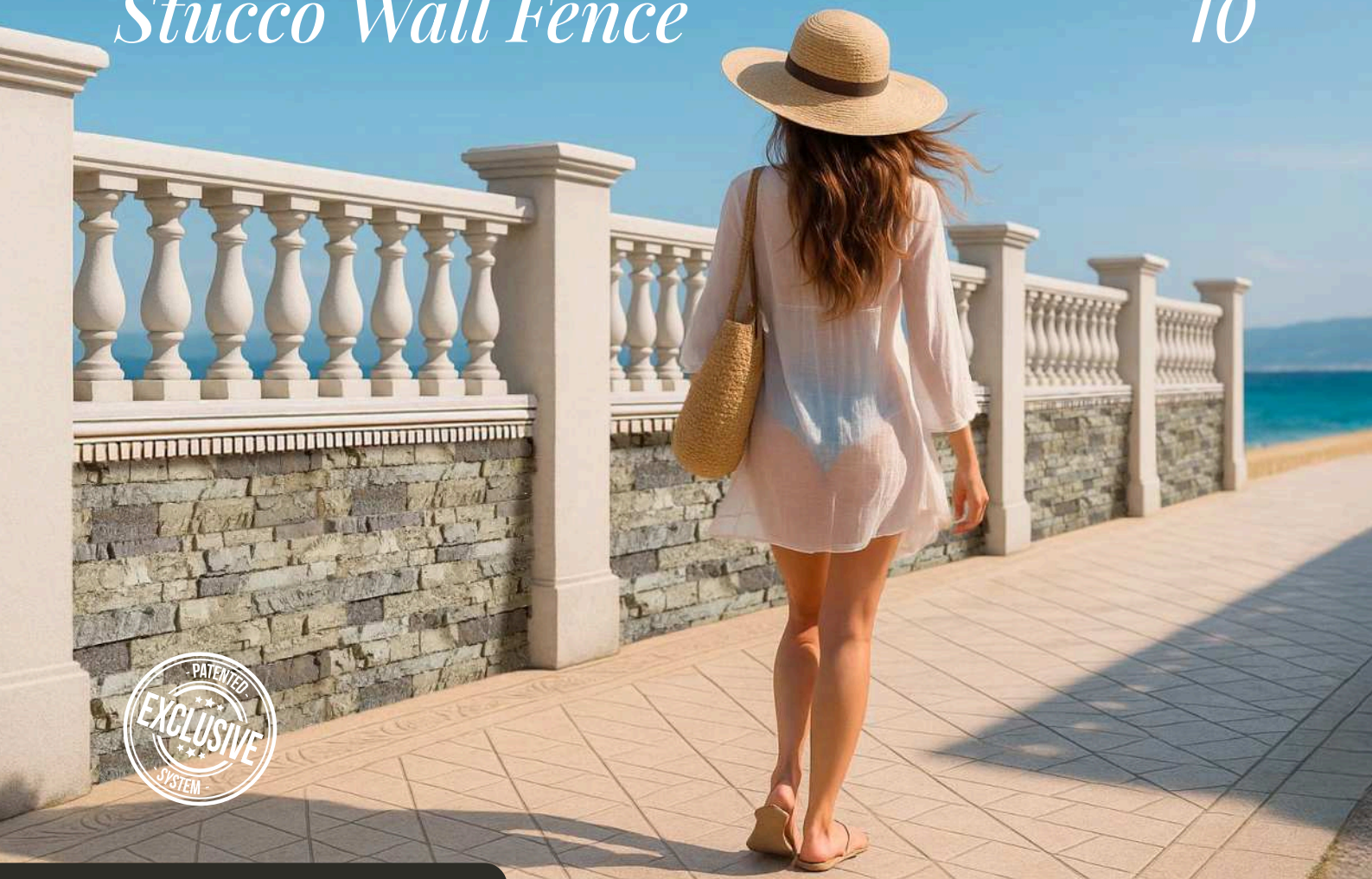
## Countryside Grace

Soft finishes and natural tones allow this fence to blend effortlessly with open landscapes. Offering necessary privacy while maintaining a welcoming presence, it enriches homes with both safety and charm. Built for lasting quality, it **provides a boundary that feels harmonious, sheltered, and dependable** for family living.



# Stucco Wall Fence

10



The sample is an example, and a **CUSTOM VERSION CAN BE MADE IN** any size with any design modifications.

Texture Used: RUSTIC-STYLE MASONRY RS-FSP 9110- 6151



**175 mph**  
Wind Resistance



**Does Not Rot**



**Not Eaten by Insects or Birds**



**UV Resistant**



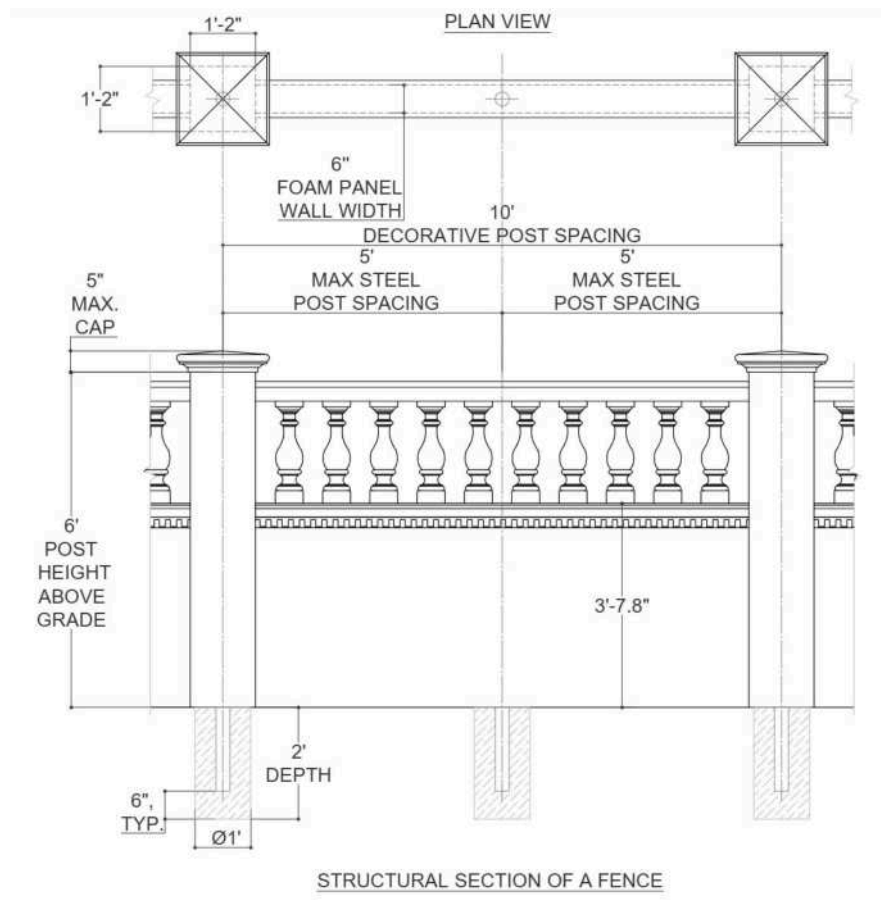
**Cold Resistant**



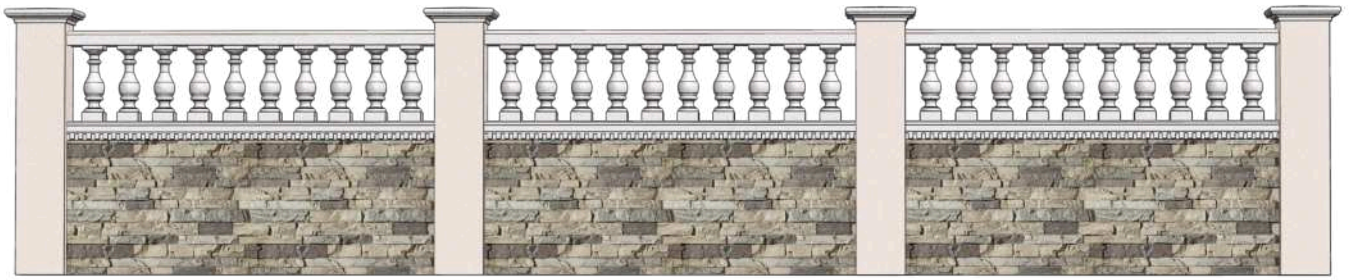
**Class A Fire Rating**



**Superior sound barrier**







ASSOL-STYLE MASONRY  
AS-FSP 6248



CASTLE-STYLE MASONRY  
CA-FSP 7534



DRY STONE WALLING  
STYLE DS-FSP 9126



RIVER ROCK-STYLE  
MASONRY RR-FSP 6087



RONDO-STYLE MASONRY  
RO-FSP 6044- 6032



RUBLE-STYLE MASONRY  
RU-FSP 9082



RUSTIC-STYLE MASONRY  
RS-FSP 9110- 6151



SHAHRIAR-STYLE  
MASONRY SH-FSP 9088



PLATEAU-STYLE MASONRY  
PS-FSP 9110-6151



SLAB-STYLE MASONRY  
SL-FSP 9117



OLD BRICK-STYLE  
MASONRY OB-FSP 6053



RUSTIC BRICK-STYLE  
MASONRY RB-FSP 7004

## Coastal Breeze

Light hues and airy design elements evoke the serenity of seaside living. Resistant to harsh weather, it ensures dependable protection without losing elegance. Perfect for waterfront homes, this fence combines strength, privacy, and style, **transforming outdoor areas into refined retreats filled with coastal freshness.**



# Stucco Wall Fence

11



The sample is an example, and a **CUSTOM VERSION CAN BE MADE IN** any size with any design modifications.

Texture Used: ASSOL-STYLE MASONRY AS-FSP 7014



175 mph  
Wind Resistance



Does  
Not Rot



Not Eaten by  
Insects or Birds



UV  
Resistant



Cold  
Resistant

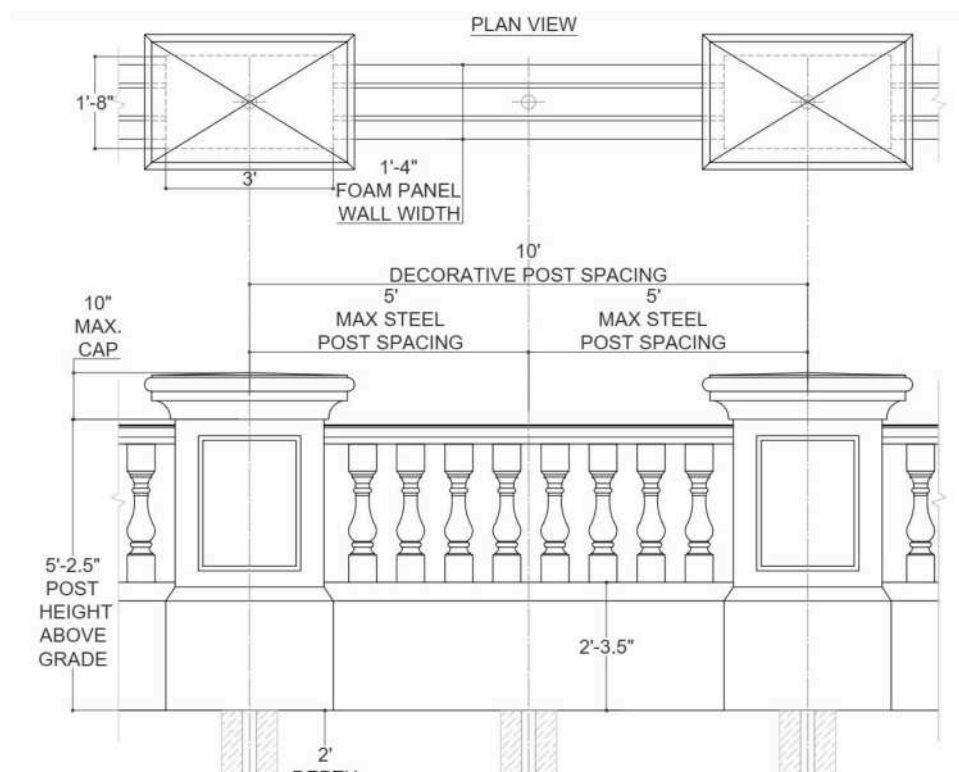


Class A  
Fire Rating

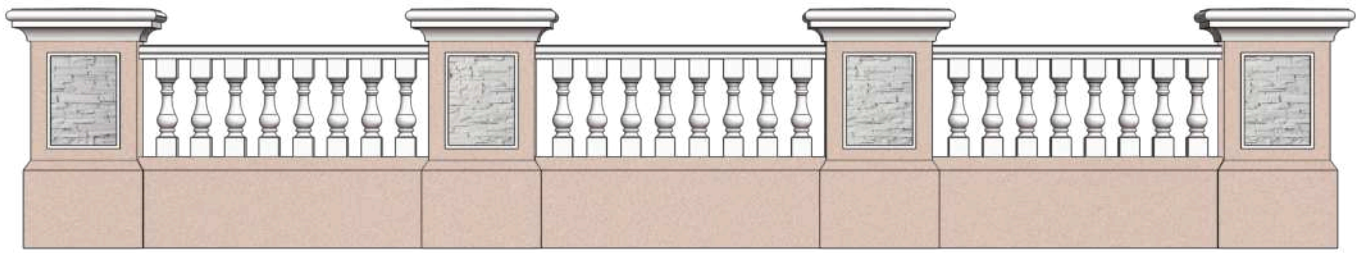


Superior sound  
barrier

28







ASSOL-STYLE MASONRY  
AS-FSP 7014



CASTLE-STYLE MASONRY  
CA-FSP 7629



DRY STONE WALLING  
STYLE DS-FSP 9152



RIVER ROCK-STYLE  
MASONRY RR-FSP 9092



RONDO-STYLE MASONRY  
RO-FSP 6100- 9080



RUBLE-STYLE MASONRY  
RU-FSP 6004



RUSTIC-STYLE MASONRY  
RS-FSP 9117- 6200



SHAHRIAR-STYLE  
MASONRY SH-FSP 9088



PLATEAU-STYLE  
MASONRY PS-FSP 6094



SLAB-STYLE MASONRY  
SL-FSP 6149-9084



OLD BRICK-STYLE  
MASONRY OB-FSP 0027



RUSTIC BRICK-STYLE  
MASONRY RB-FSP 9112

## Noble Guard

Commanding in presence yet refined in detail, this fence **blends resilience with sophistication**. Its robust structure provides reliable protection, while elegant accents add dignity and style. Ideal for prestigious estates, it serves as both a **safeguard and a statement of status**, uniting grandeur with dependable security.



# Stucco Wall Fence

12



The sample is an example, and a **CUSTOM VERSION CAN BE MADE IN** any size with any design modifications.

Texture Used: SLAB-STYLE MASONRY SL-FSP 6149-9084



175 mph  
Wind Resistance



Does  
Not Rot



Not Eaten by  
Insects or Birds



UV  
Resistant



Cold  
Resistant

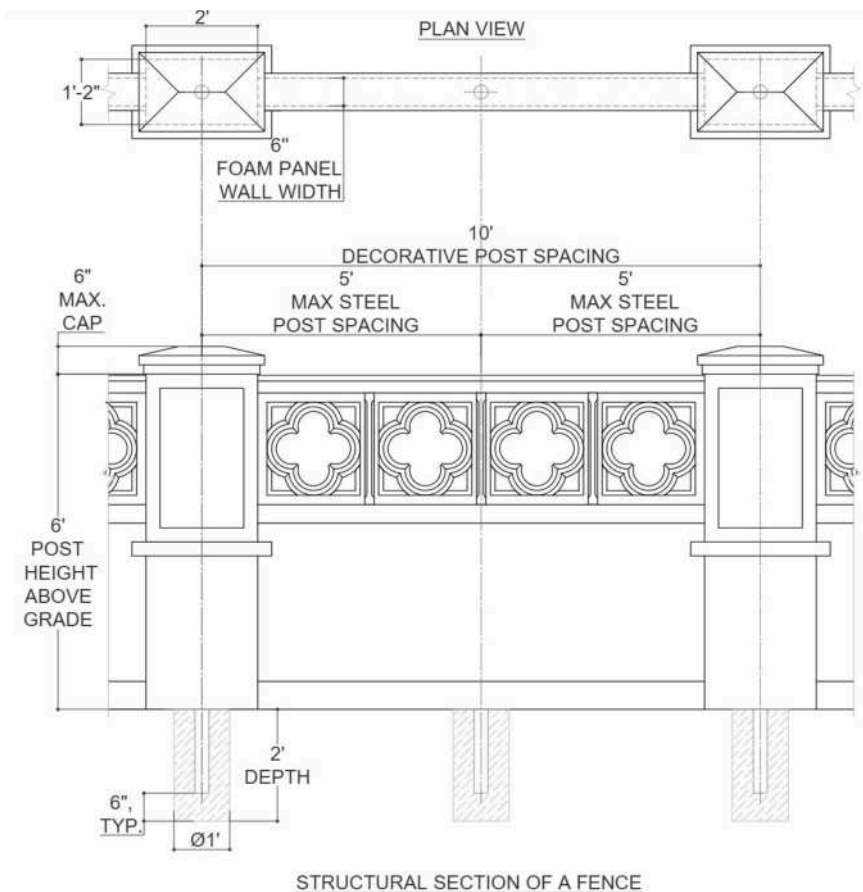


Class A  
Fire Rating

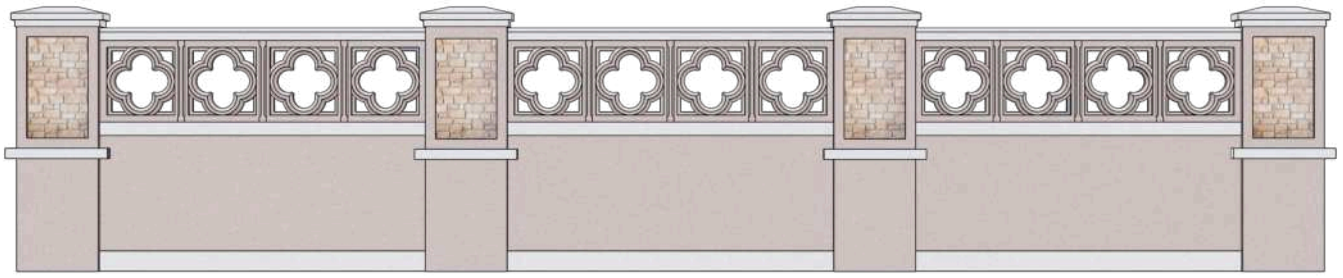


Superior sound  
barrier

30







ASSOL-STYLE MASONRY  
AS-FSP 7060



CASTLE-STYLE MASONRY  
CA-FSP 9078



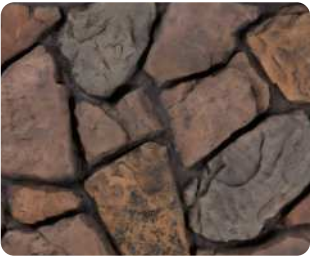
DRY STONE WALLING  
STYLE DS-FSP 9098



RIVER ROCK-STYLE  
MASONRY RR-FSP 9143



RONDO-STYLE MASONRY  
RO-FSP 6151- 6278



RUBLE-STYLE MASONRY  
RU-FSP 6053



RUSTIC-STYLE MASONRY  
RS-FSP 7650



SHAHRIAR-STYLE  
MASONRY SH-FSP 6046



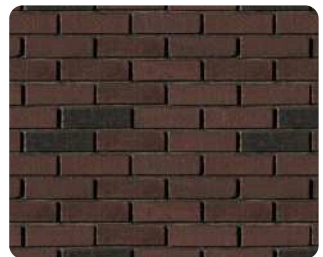
PLATEAU-STYLE MASONRY  
PS-FSP 6094-6060



SLAB-STYLE MASONRY  
SL-FSP 6149-9084



OLD BRICK-STYLE  
MASONRY OB-FSP 0027



RUSTIC BRICK-STYLE  
MASONRY RB-FSP 6034

## Modern Shield

Sharp geometry and clean lines define this fence, giving it a bold contemporary edge. Built from durable materials, it delivers both security and complete privacy. Its **striking design complements modern developments**, projecting confidence and strength while balancing practicality with stylish architectural character.



# Stucco Wall Fence

13



The sample is an example, and a **CUSTOM VERSION CAN BE MADE IN** any size with any design modifications.

Texture Used: ASSOL-STYLE MASONRY AS-FSP 7052



**175 mph**  
Wind Resistance



**Does**  
Not Rot



**Not Eaten by**  
Insects or Birds



**UV**  
Resistant



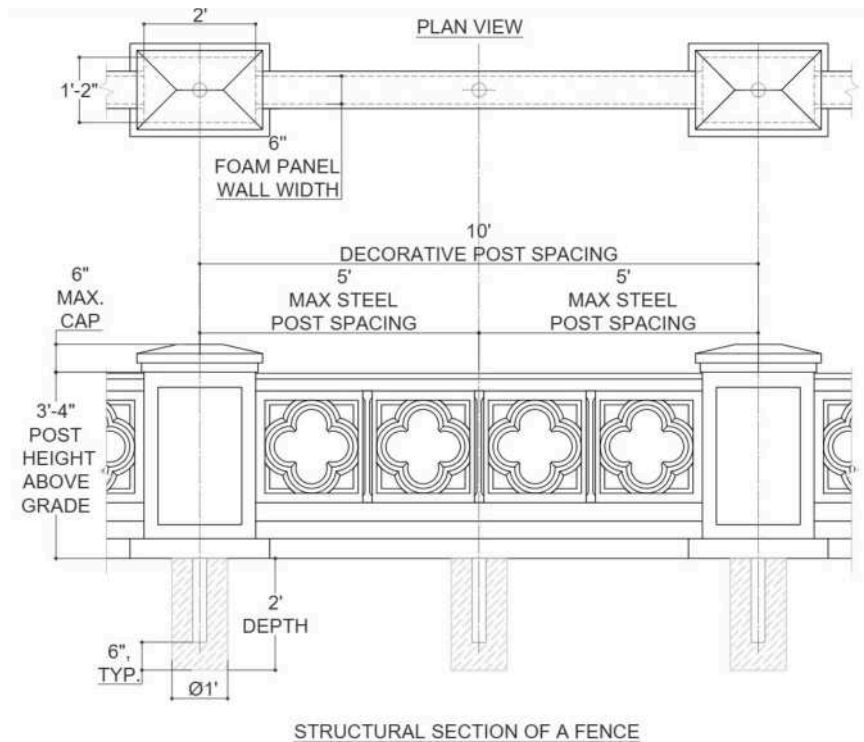
**Cold**  
Resistant



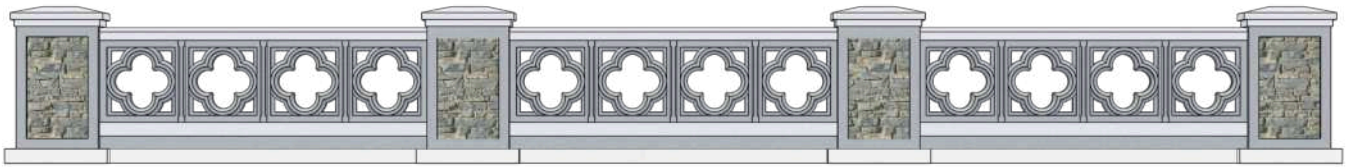
**Class A**  
Fire Rating



**Superior sound**  
barrier







ASSOL-STYLE MASONRY  
AS-FSP 7052



CASTLE-STYLE MASONRY  
CA-FSP 7643



DRY STONE WALLING  
STYLE DS-FSP 9111



RIVER ROCK-STYLE  
MASONRY RR-FSP 6087



RONDO-STYLE MASONRY  
RO-FSP 7031- 7018



RUBLE-STYLE MASONRY  
RU-FSP 0038



RUSTIC-STYLE MASONRY  
RS-FSP 9090



SHAHRIAR-STYLE  
MASONRY SH-FSP 7025



PLATEAU-STYLE  
MASONRY PS-FSP 7060



SLAB-STYLE MASONRY  
SL-FSP 9089



OLD BRICK-STYLE  
MASONRY OB-FSP 0027



RUSTIC BRICK-STYLE  
MASONRY RB-FSP 6040

## Regal Frame

Elegant symmetry and patterned openings give this fence a **stately yet inviting look**. Its refined geometry adds rhythm and transparency, letting light and air flow while maintaining privacy. **Strong in build and graceful in detail**, it frames the property with prestige, sophistication, and lasting reliability.

# Custom Stucco Fence

15



The sample is an example, and a **CUSTOM VERSION CAN BE MADE IN** any size with any design modifications.

Texture Used: SHAHRIAR-STYLE MASONRY SH-FSP 7025



**175 mph**  
Wind Resistance



**Does**  
Not Rot



**Not Eaten by**  
Insects or Birds



**UV**  
Resistant



**Cold**  
Resistant

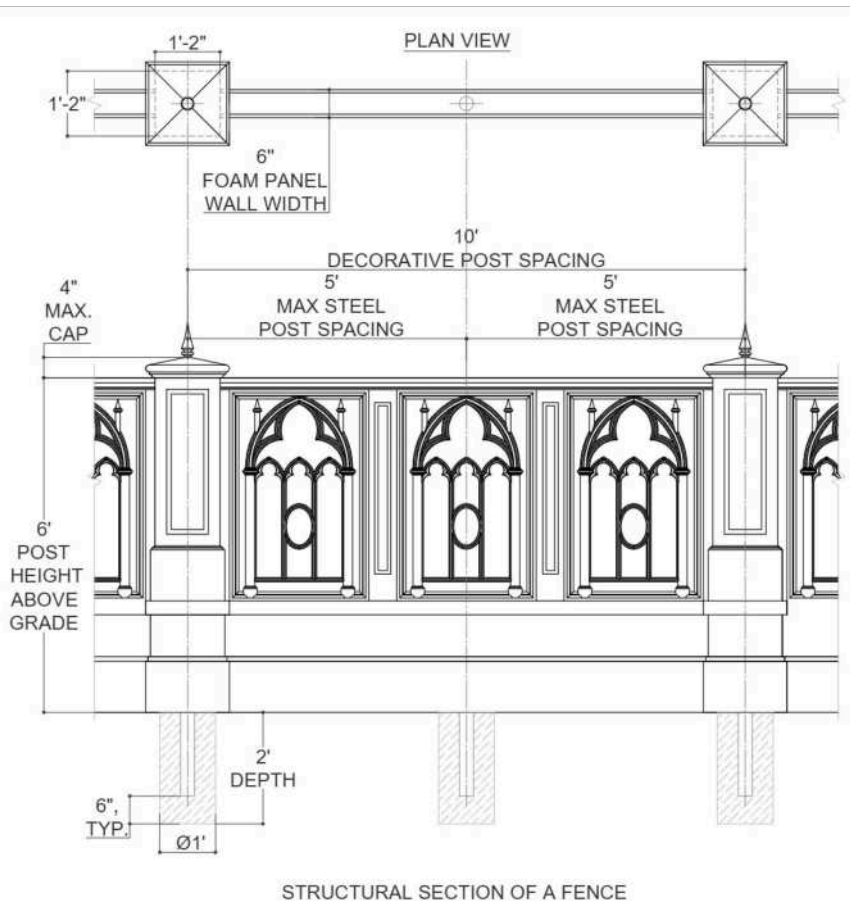


**Class A**  
Fire Rating



**Superior sound**  
barrier

34







ASSOL-STYLE MASONRY  
AS-FSP 7081



CASTLE-STYLE MASONRY  
CA-FSP 7081



DRY STONE WALLING  
STYLE DS-FSP 9117



RIVER ROCK-STYLE  
MASONRY RR-FSP 6087



RONDO-STYLE MASONRY  
RO-FSP 7081- 7079



RUBLE-STYLE MASONRY  
RU-FSP 9082



RUSTIC-STYLE MASONRY  
RS-FSP 9097



SHAHRIAR-STYLE  
MASONRY SH-FSP 7025



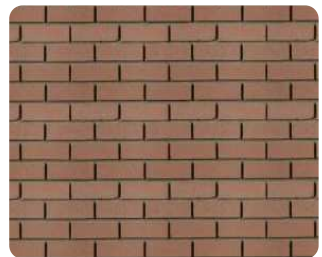
PLATEAU-STYLE MASONRY  
PS-FSP 9117-9092



SLAB-STYLE MASONRY  
SL-FSP 9112



OLD BRICK-STYLE  
MASONRY OB-FSP 9117



RUSTIC BRICK-STYLE  
MASONRY RB-FSP 6060

## Eternal Stone

A solid fence with faux stone accents delivers unmatched performance and reliability. Designed to last for generations, it protects with natural strength and timeless beauty. Its bold presence combines elegance with resilience, making it the perfect choice for homeowners who value **durability, classic style, and lasting security** for their property.





The sample is an example, and a **CUSTOM VERSION CAN BE MADE IN** any size with any design modifications.

Texture Used: SLAB-STYLE MASONRY SL-FSP 6149-9084



175 mph  
Wind Resistance



Does  
Not Rot



Not Eaten by  
Insects or Birds



UV  
Resistant



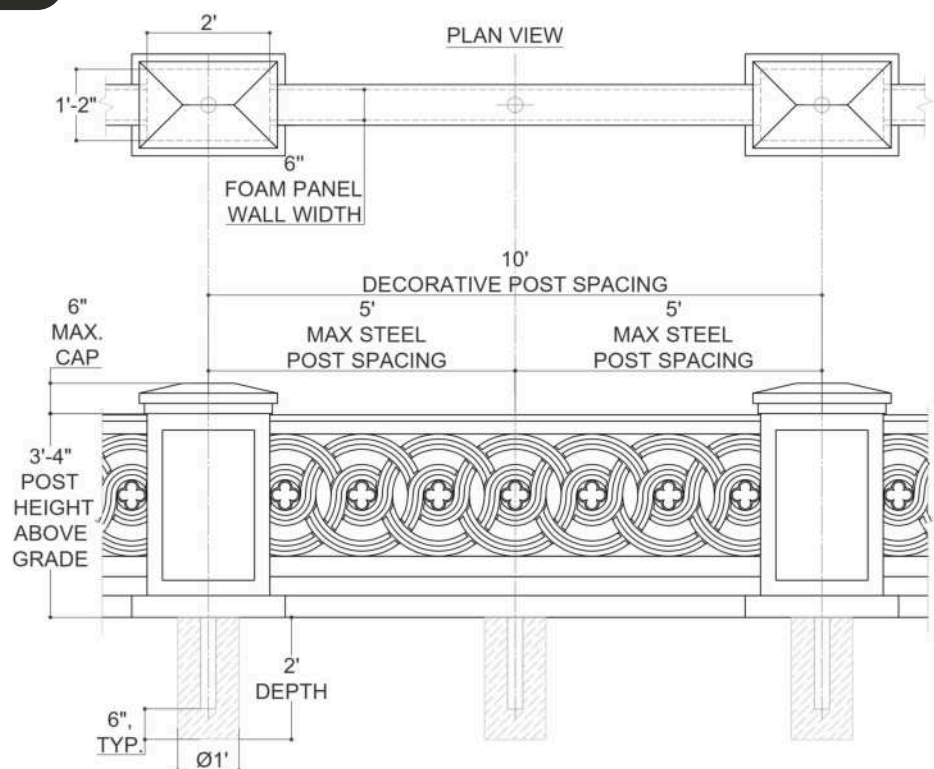
Cold  
Resistant



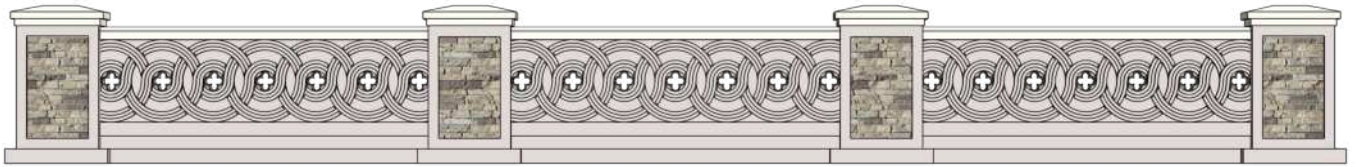
Class A  
Fire Rating



Superior sound  
barrier







SLAB-STYLE MASONRY  
SL-FSP 6149-9084



CASTLE-STYLE MASONRY  
CA-FSP 7629



DRY STONE WALLING  
STYLE DS-FSP 9152



RIVER ROCK-STYLE  
MASONRY RR-FSP 6087



RONDO-STYLE MASONRY  
RO-FSP 6151- 6278



RUBLE-STYLE MASONRY  
RU-FSP 9082



RUSTIC-STYLE MASONRY  
RS-FSP 9117- 6200



SHAHRIAR-STYLE  
MASONRY SH-FSP 9093



PLATEAU-STYLE MASONRY  
PS-FSP 9110-6151



SLAB-STYLE MASONRY  
SL-FSP 9131



OLD BRICK-STYLE  
MASONRY OB-FSP 7715



RUSTIC BRICK-STYLE  
MASONRY RB-FSP 9112

## Gothic Grace

Inspired by Gothic architecture, this fence design features a distinctive quatrefoil motif, symbolizing **harmony and timeless artistry**. Perfect for estates, parks, and historic-inspired residences, it creates an atmosphere of elegance and tranquility. The refined stone detailing blends durability with aesthetic charm, making it ideal for those who value both security and a **touch of historical sophistication**.





The sample is an example, and a **CUSTOM VERSION CAN BE MADE IN** any size with any design modifications.

Texture Used: FREESTYLE



**175 mph**  
Wind Resistance



**Does**  
Not Rot



**Not Eaten by**  
Insects or Birds



**UV**  
Resistant



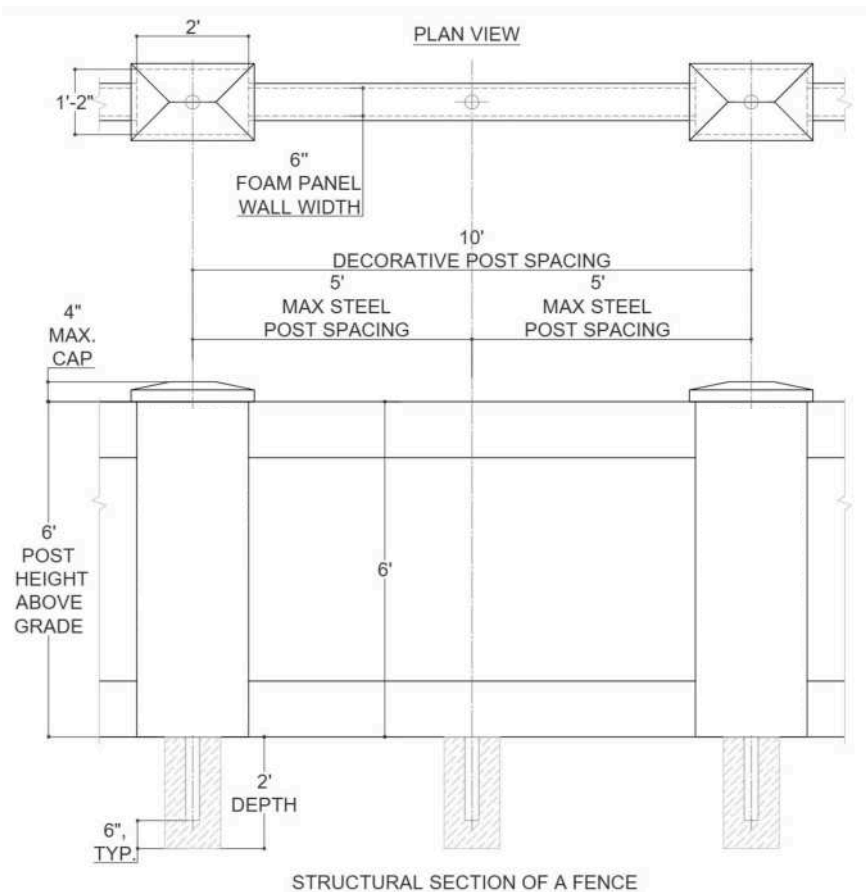
**Cold**  
Resistant



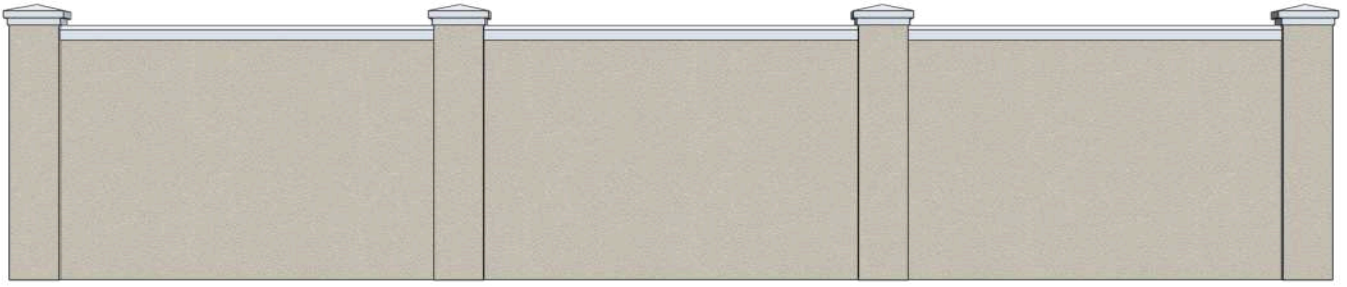
**Class A**  
Fire Rating



**Superior sound**  
barrier







## Stucco Textures

Royal Foam offers nine distinctive stucco finishes — from refined smooth surfaces to bold, expressive reliefs. Each texture can be applied across the entire fence or combined with faux stone, faux brick, or faux wood elements for a unique and customized design. This flexibility allows you to create subtle elegance, modern minimalism, or a natural, rustic look. Durable and weather-resistant, every finish adds depth and individuality, ensuring your fence not only protects but also enhances the character of your property.



SANDBLAST



FREESTYLE



QUARZPUTZ



SANDPEBBLE



SANDPEBBLE FINE



MOJAVE



LYMESTONE



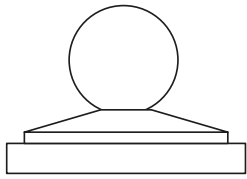
FINESSE



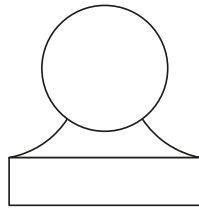
ADOBE



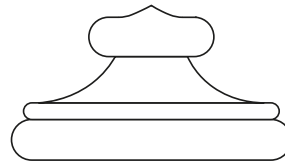
# Piers & Caps



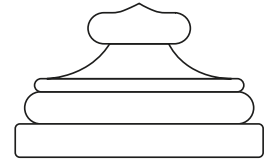
PC 01



PC 02



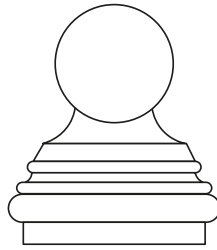
PC 03



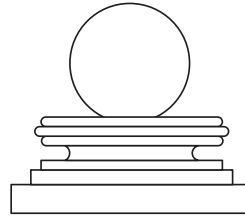
PC 04



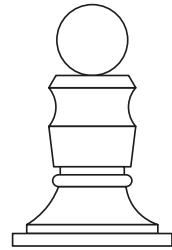
PC 05



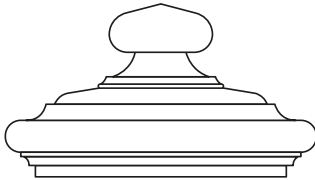
PC 06



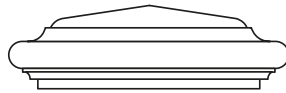
PC 07



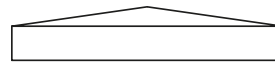
PC 08



PC 09



PC 10



PC 11



PC 12



PC 13



PC 14

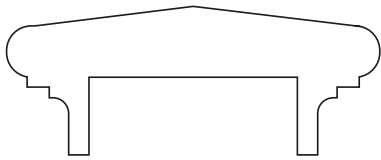


Posts can be dramatically enhanced with the addition of functional lamps or lanterns. This not only adds sophistication to the fence structure, but also illuminates the premises at night. All lighting fixtures are to be purchased and provided by the client for installation.

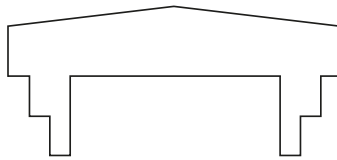


# Wall Capitals

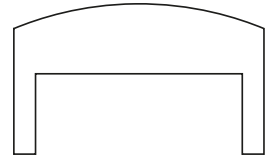
Wall capitals serve both decorative and functional purposes. Installed on top of fence columns, they protect the structure by channeling the rainwater away and encouraging snow shedding. At the same time, their varied shapes add a finished, architectural touch to the overall design.



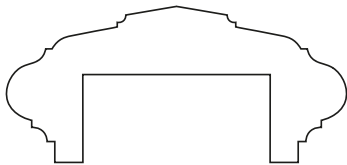
WC 01



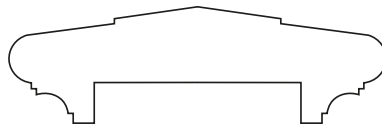
WC 02



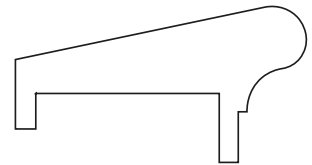
WC 03



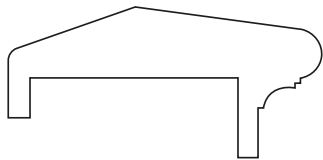
WC 04



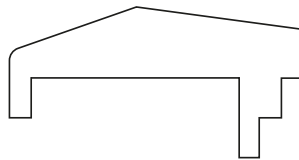
WC 05



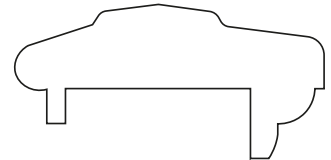
WC 06



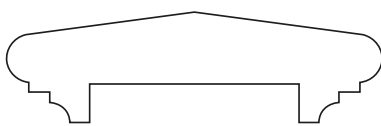
WC 07



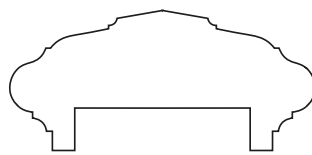
WC 08



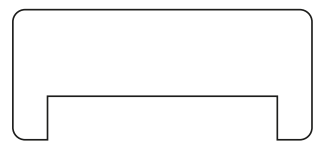
WC 09



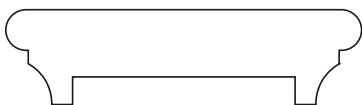
WC 10



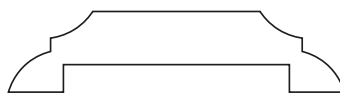
WC 11



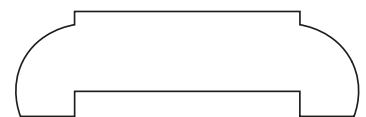
WC 12



WC 13



WC 14



WC 15

# *Faux Wood Textures*

Faux wood elements are crafted to replicate the warmth and richness of natural timber while offering superior durability. Each piece is hand-painted, ensuring that no two textures are identical — every pattern has its own unique character. This artisanal finishing process adds depth, variation, and authenticity to the surface. When applied to fence elements, faux wood creates a refined, premium look that combines the beauty of real wood with the long-lasting performance of architectural foam.



BARNWOOD STYLE BW-FWB 6055



BARNWOOD STYLE BW-FWP 9110



ROUGH SAWN STYLE RS-FWT 7521



BRUSHED TEXTURE STYLE BR-FWP 9143



GRAINY STYLE GS-FWP 6104



GRAINY STYLE GS-FWP 9105



ROUGH HEWN STYLE RH-FWP 6069



HAND HEWN STYLE HH-FWP 6033



ROUGH SAWN STYLE RS-FWP 9143



ROUGH SAWN STYLE RS-FWT 7520



SANDED STYLE SS-FWP 6034



WEATHERED TEXTURE STYLE WE-FWP 6090



WEATHERED TEXTURE STYLE WE-FWP 6079



SANDED STYLE SS-FWP 9105



GRAINY STYLE GS-FWP 6277



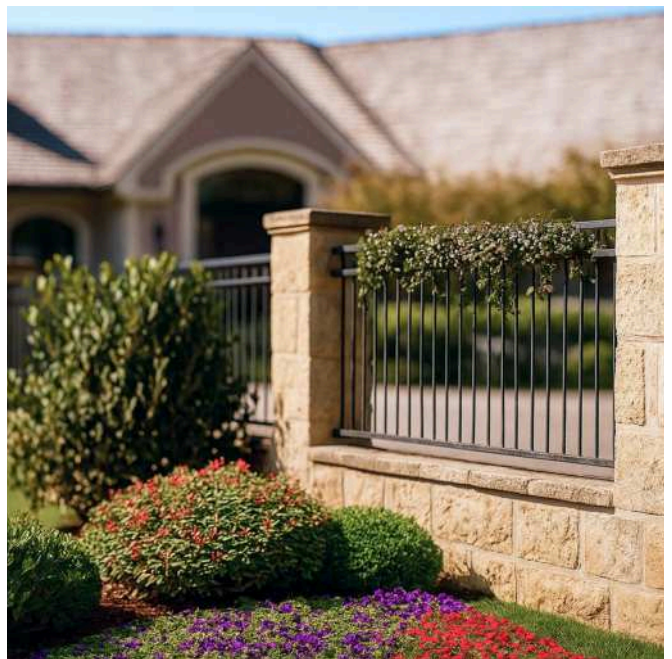
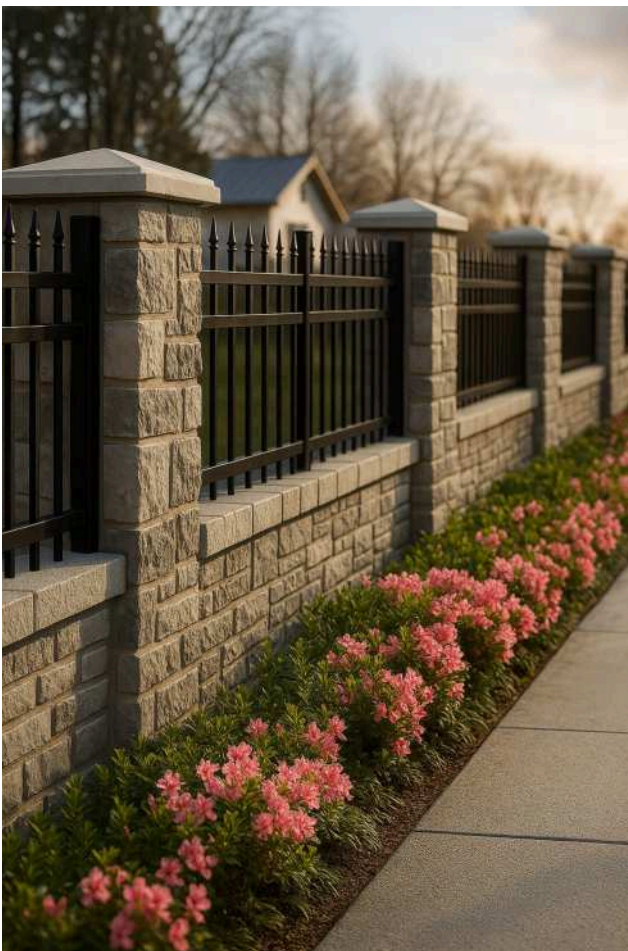
GRAINY STYLE GS-FWP 6143



# Gallery

























# Technical Installation Manual:

## *Fence Panel with Concrete Foundation and Galvanized Steel Posts*

### **Purpose and Method Overview**

This installation method is designed for decorative or functional fence panels, ensuring high durability, precision, and aesthetic quality.

### **It combines:**

- Removable EPS foam inserts to form pipe sockets in concrete;
- Monolithic concrete footings;
- Galvanized steel posts, installed after curing;
- Temporary faux wooden braces to hold the panel in vertical position during curing.

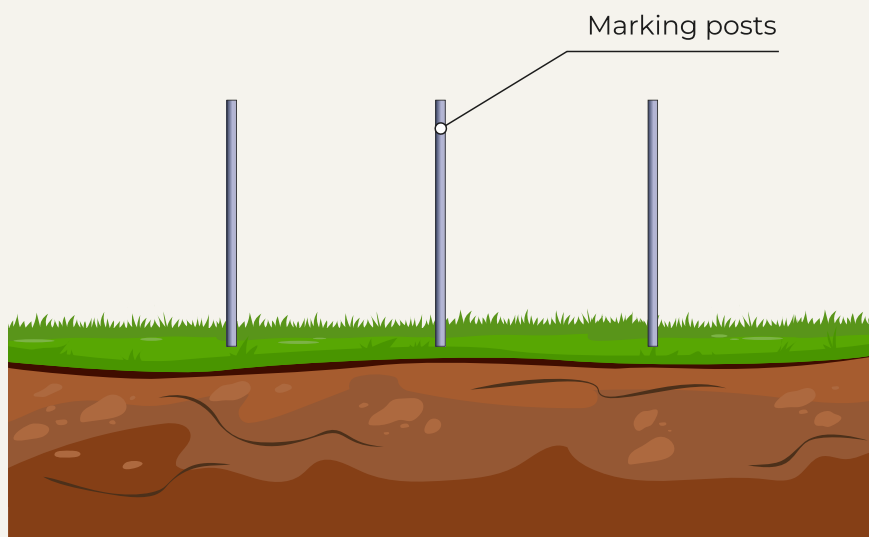
## *01 Site Preparation*

### **1.1 Layout and Clearing**

- Accurately mark the fence line according to the approved plan.
- Clear the area of vegetation, debris, and any obstructions.
- Verify the absence of underground utilities in the excavation area.

### **1.2 Ground Preparation**

- Level and compact the soil at designated foundation points.
- If needed, prepare a compacted gravel or sand base for stability and drainage.



Drawing 1



## 02 *Formwork and EPS Insert Installation*

### 2.1 Formwork Setup

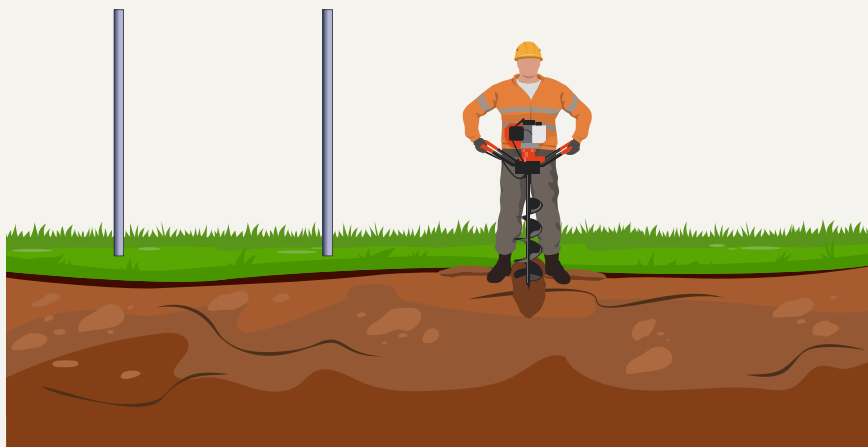
- Install rigid wooden or metal formwork along the marked line.
- Secure the formwork using stakes, braces, and cross-supports.
- Ensure the top edge of the formwork matches the target concrete level.



Drawing 2.1

### 2.2 EPS Insert Placement

- Place EPS (Expanded Polystyrene) inserts inside the formwork where future post sockets will be.
- The size and shape of each insert must match the pipe diameter and depth.
- Align EPS inserts precisely with the openings in the fence panel.
- Fix the inserts using adhesive or spacers to prevent floating or shifting during the pour.



Drawing 2.2



## 03 Concrete Pouring

### 3.1 Preparation

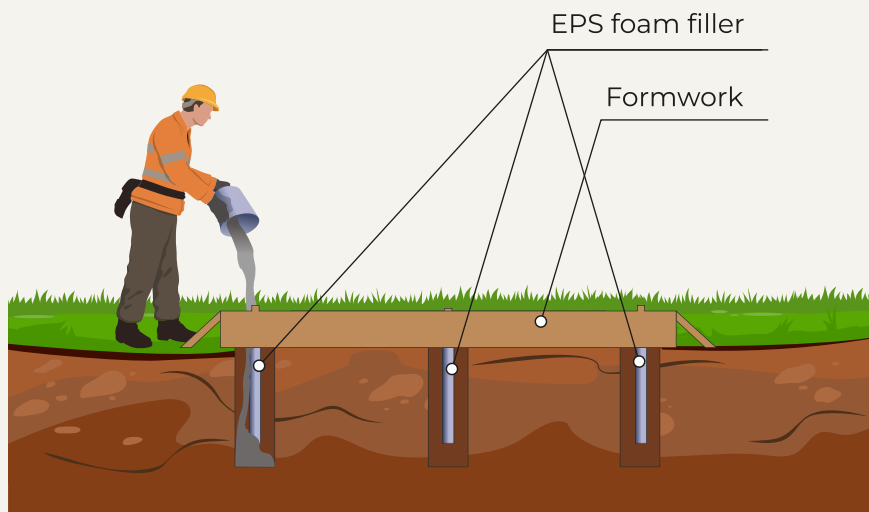
- Lightly moisten the internal surfaces of the formwork and EPS before pouring.
- Use concrete grade (3000 PSI) or as specified in the structural plan.

### 3.2 Pouring

- Pour concrete evenly into the formwork, fully surrounding the EPS inserts.
- Use vibration tools to eliminate air pockets and ensure proper compaction.
- Screed and level the surface flush with the top of the formwork.

### 3.3 Curing

- Keep the surface moist and protected from direct sun, wind, and rainfall.
- Minimum initial curing time: 72 hours



Drawing 3

## 04 Formwork Removal and EPS Extraction

### 4.1 Formwork Removal

- Carefully remove the formwork after 48–72 hours once the concrete gains strength.

### 4.2 EPS Removal

- Manually remove the EPS inserts to create clean vertical sockets.
- Clear out any remaining foam or debris from the socket walls.



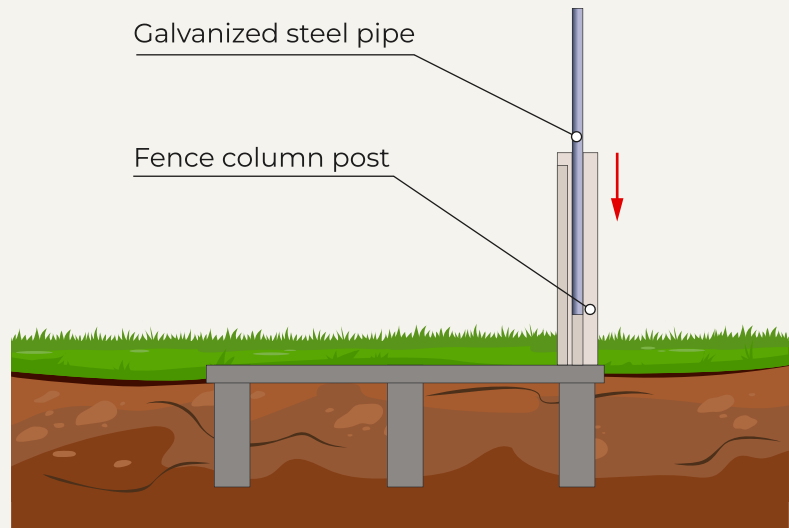
# 05 Fence Panel and Post Installation

## 5.1 Panel Positioning

- Position the panel so that the factory-drilled openings align with the concrete sockets.
- Trim the panel openings if needed for precise fit.

## 5.2 Post Installation

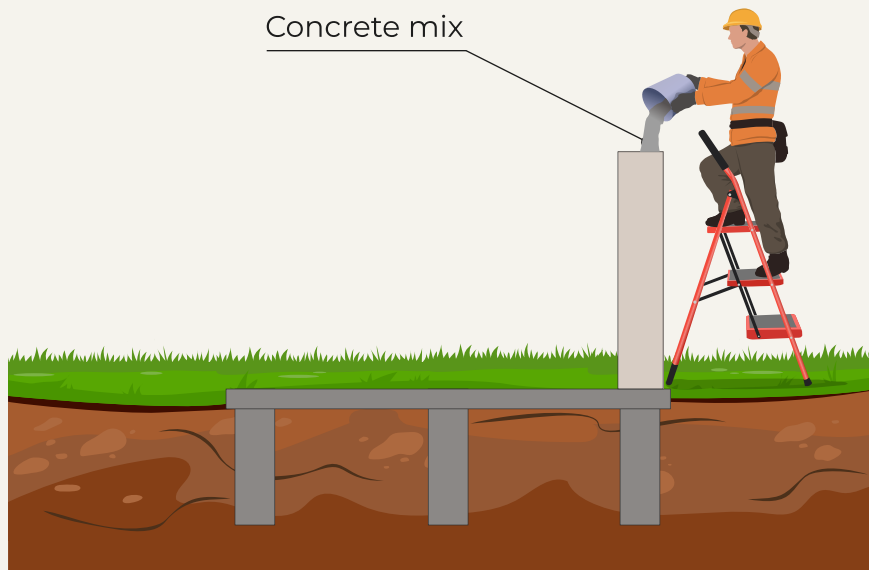
- Insert galvanized steel pipes through the panel and into the concrete sockets.
- Use a level to ensure vertical alignment of both the pipes and the panel.



Drawing 4

## 2.2 Final Concrete Backfill

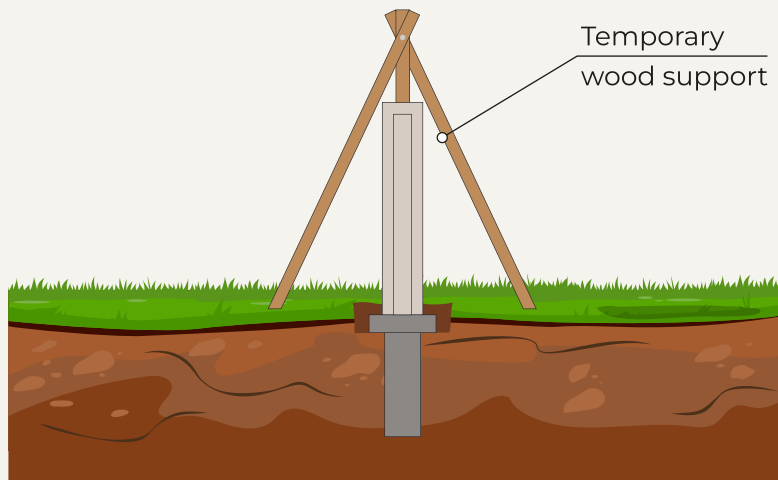
- Through the panel's access holes, pour concrete into the post sockets to anchor the pipes.
- Compact the fill and clean up any excess material.
- Protect the concrete from impact or weather during the curing phase.



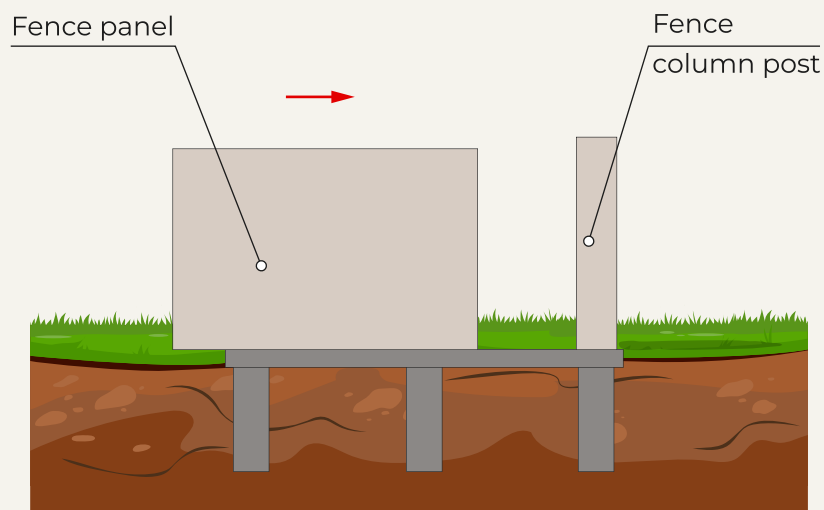
Drawing 5

## 06 Temporary Bracing Installation

- Install temporary triangular wooden braces on both sides of the panel.
- One brace point is fixed in the ground, the other is attached midheight on the panel.
- Braces must be firmly secured to prevent lateral movement.
- Leave braces in place until the concrete has fully cured (typically 48-72 hours).

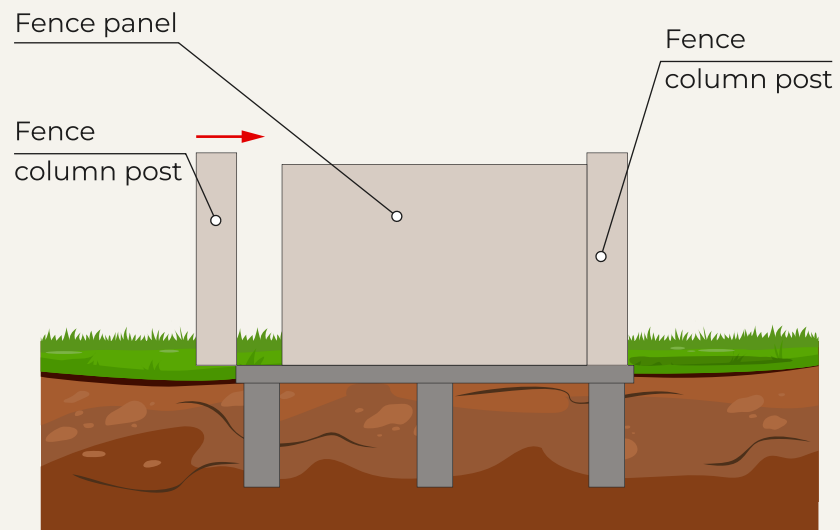


Drawing 6

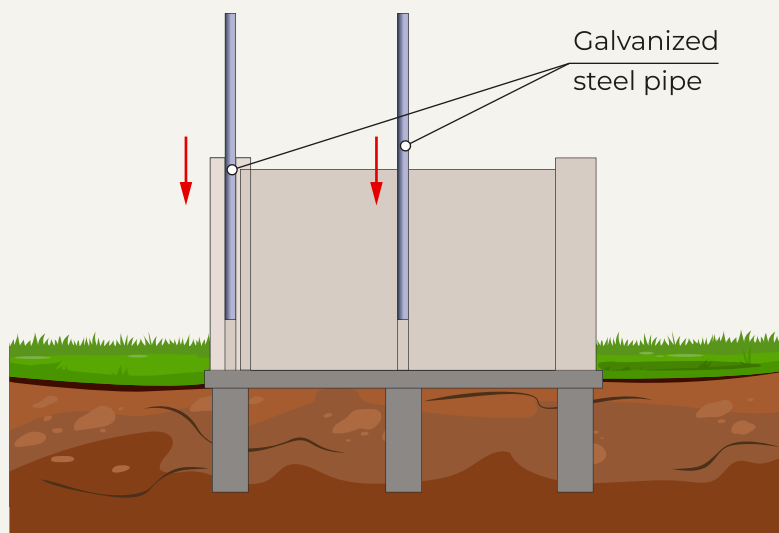


Drawing 7





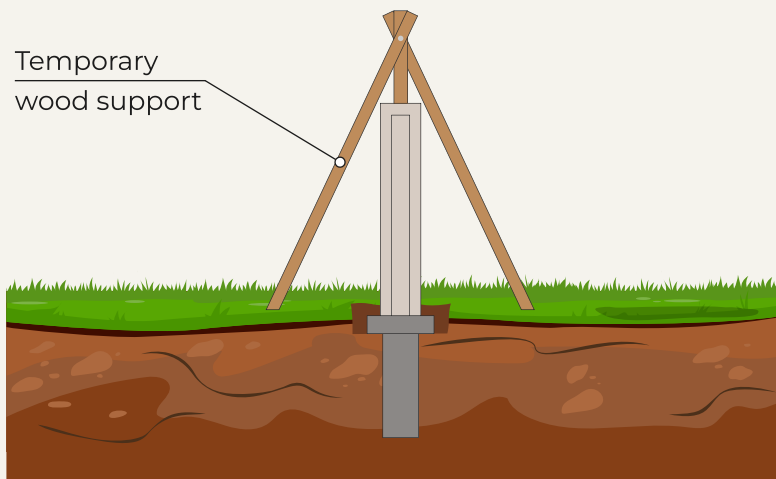
Drawing 8



Drawing 9



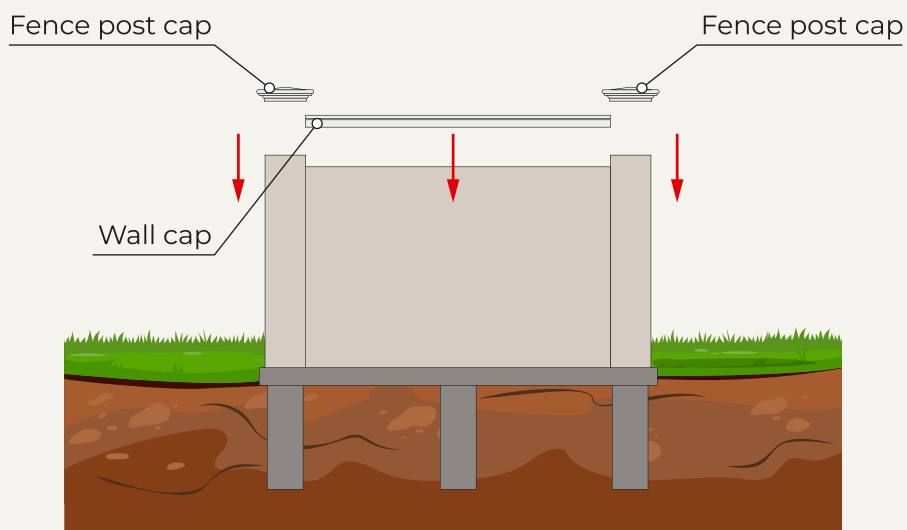
Drawing 10



Drawing 11

## 07 Finalization and Finishing

- Verify the panel's vertical alignment and structural stability.
- Install the wall cap and decorative post capitals according to the design specification.
- Clear the work site of any debris or temporary materials.



Drawing 12



# Expert Report: Fire Safety of Royal Foam Fences (Class A)

## 1. Executive Summary

The Royal Foam fence system is a multi-layer mass-spring-mass composite barrier: EPS core +PVC sheet (0.125") on both sides + polyurethane cladding (2", 16 lb/ft<sup>3</sup>) + polyurea (~33 mil) with primer + synthetic stucco. This configuration creates a sequence of non-combustible and self-extinguishing barrier layers, fully encapsulating the combustible EPS core. With the use of FR-grade materials and proper assembly, the system demonstrates potential to achieve ASTM E84 Class A classification (Flame Spread Index  $\leq$  25; Smoke Developed Index  $\leq$  450).

## 2. Regulatory Framework and Classification Standards

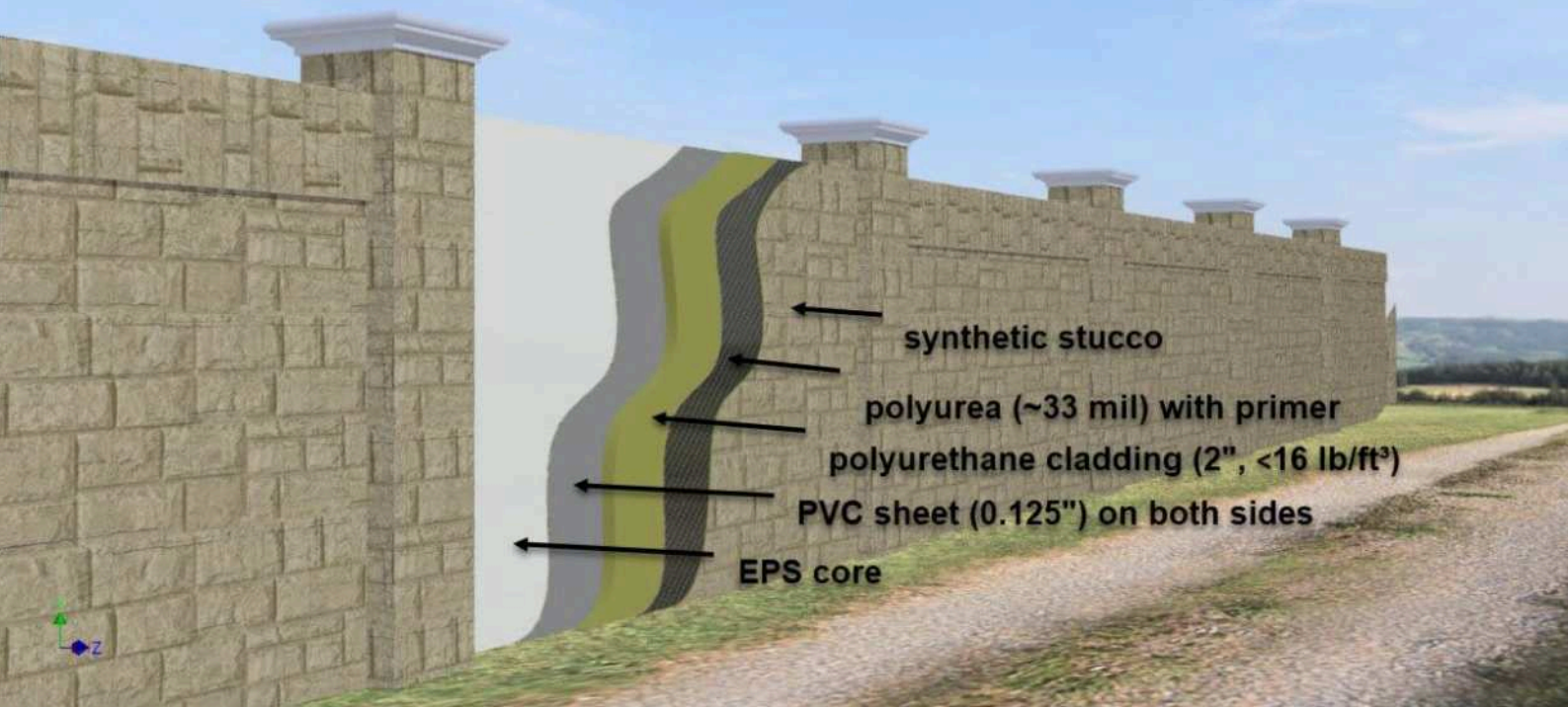
- ASTM E84 / UL 723 – Standard Test Method for Surface Burning Characteristics of Building Materials. Classification thresholds: Class A (FSI 0–25; SDI  $\leq$  450); Class B (26–75); Class C (76–200).
- NFPA 285 – Full-scale test method for fire propagation on exterior wall assemblies containing combustible components; applicable for barrier-protected EPS/EIFS-like systems.
- EN 13501-1 (Euroclass): European classification A1–F; reference point for international comparisons.

## 3. Materials and Their Fire Safety Role

Layer	Fire Performance	Target Classification
Synthetic Stucco	Non-combustible mineral layer; primary fire shield	ASTM E84 Class A / EN 13501-1 A1
Polyurea (33 mil)	Forms protective char; slows flame spread	ASTM E84 Class A/B
PVC 0.125"	Self-extinguishing; limits flame spread	ASTM E84 Class B
Polyurethane 2" (16 lb/ft <sup>3</sup> , FR)	Massive thermal barrier; with FR additives slows ignition	ASTM E84 Class A/B
EPS core (FR-grade)	Combustible by nature, but fully encapsulated; no flame contact	ASTM E84 Class A (in system)

## 4. Pathway to Class A Certification

1. FR-formulations for polyurea and PU with proven ASTM E84 Class A performance.
2. EPS core specified as FR-grade with valid E84 reports from suppliers.
3. Laboratory testing of the complete Royal Foam panel under ASTM E84 to confirm FSI/SDI limits.
4. NFPA 285 full-scale wall assembly testing, if required by IBC/IFC for exterior applications.
5. Documentation alignment with IBC/IFC/IRC, which reference ASTM E84/UL 723 Class A requirements.



## 5. Comparative Analysis with Other Fence Materials

Fence Material	Fire Behavior	Typical Classification	Notes
Wood / WPC	Combustible, rapid flame spread	Often Class C or none	High fire load, needs treatment
Steel / Aluminum	Non-combustible	Not rated (non-combustible)	Conduct heat, require detailing
Concrete / Masonry	Non-combustible, high mass	Not rated (A1 in Euroclass)	Heavy, costly installation
Vinyl (PVC) Fences	Self-extinguishing but polymeric	ASTM E84 Class B	Smoke release considerations
HDPE / Composite Panels	Combustible without FR additives	Class C-B	Requires FR additives, check E84
EIFS-like Stucco-over-Foam	Performance depends on encapsulation	Often NFPA 285 approved	Analogous to Royal Foam system
Royal Foam (FR package)	Encapsulated EPS; barrier-protected	Target ASTM E84 Class A	Lightweight, modular, near-concrete safety

## 6. Key Engineering Measures for Class A

- Full encapsulation of EPS with no exposed edges or gaps.
- Verified FR-grade formulations for polyurea and polyurethane.
- Strict quality control for stucco thickness and continuity.
- Proper detailing at joints, ground terminations, and fastener penetrations.
- Independent laboratory testing of both materials and full assemblies.



## 7. Certification Roadmap

Step 1: Obtain supplier reports for FR-grade EPS, polyurea, and PU (ASTM E84 Class A certified).

Step 2: Conduct ASTM E84 tunnel test for complete Royal Foam panel.

Step 3: If required by project code, conduct NFPA 285 wall assembly test.

Step 4: Reference IBC/IFC provisions requiring Class A (25/50 rule).

Step 5: Maintain QA/QC and update reports with each material change.

## 7. Certification Roadmap

The multi-layer Royal Foam fence system, with FR-modified components and proper assembly, demonstrates clear potential to meet ASTM E84 Class A requirements. When encapsulated with non-combustible and self-extinguishing layers, the EPS core does not contribute to flame spread. With additional NFPA 285 testing, the system can be recognized as equivalent to masonry and concrete walls in terms of fire safety, while remaining lighter, modular, and more cost-effective.

# *Expert Report on the Acoustic Performance of Royal Foam Fences*

## 1. Executive Summary

Royal Foam fences are engineered as a multi-layer sandwich barrier system, integrating EPS foam cores, PVC sheets, polyurea coatings, synthetic stucco, and high-density polyurethane layers. This unique structure leverages both the Mass Law (Beranek, 'Acoustics', 1954) and the Mass-Spring-Mass principle (Cremer, 'Theory of Sound Transmission Through Walls', 1948), resulting in performance metrics comparable to masonry walls.

Expected performance:

- STC (Sound Transmission Class): 35–40+, comparable to concrete walls (ASTM E90 / ASTM E413).
- NRC (Noise Reduction Coefficient): 0.7–0.9 depending on frequency (ASTM C423).
- Insertion Loss: 20–30 dB, equivalent to a 3–4× reduction in perceived external noise.

Royal Foam fences deliver not only superior acoustic insulation but also combine aesthetics, durability, and cost efficiency.

## 2. Technical Background: NRC and STC

- NRC (Noise Reduction Coefficient): Indicates the fraction of sound absorbed by a material (scale 0–1). Measured according to ASTM C423.
- STC (Sound Transmission Class): Rates the ability of a partition to resist sound transmission. Measured according to ASTM E90 and classified by ASTM E413.

Reference values:

- EPS foam core: NRC 0.7–0.8; STC  $\approx$  26–30.
- Polyurethane acoustic panels: NRC up to 0.9.
- Concrete wall: NRC  $<$  0.1; STC  $\approx$  38–45.
- Royal Foam fence system: NRC 0.7–0.9; STC 35–40+.

## 3. Royal Foam Multi-Layer Structure

The fence system consists of:

- Core: EPS foam (absorptive, lightweight).
- Structural layers: PVC sheets 0.125" ( $\approx$  3.2 mm) on both sides.
- Protective coatings: Polyurea 33 mil ( $\approx$  0.84 mm) with primer, plus synthetic stucco texture.
- Mass layers: Polyurethane 2" ( $\approx$  50 mm) thick, density 16 lb/ft<sup>3</sup> ( $\approx$  256 kg/m<sup>3</sup>) on both sides.

This configuration creates a 'mass-spring-mass' system, reducing resonance and improving transmission loss.

4. Acoustic Performance Mechanisms

- 1. Mass Law Effect: Each doubling of surface mass improves transmission loss by ~6 dB (Beranek, 1954).
- 2. Mass-Spring-Mass Effect: EPS decouples the two massive polyurethane layers, enhancing isolation at low and mid frequencies (Cremer, 1948).
- 3. Rigidity: PVC and polyurea layers reduce vibration and panel resonance.
- 4. Absorption: EPS and textured coatings provide NRC gains and reduce echo.
- 5. Barrier Geometry: Height of 6–8 ft increases insertion loss by blocking line-of-sight noise paths (FHWA Highway Noise Barrier Design Handbook, 2011).

5. Comparative Acoustic Ratings

Fence Type	NRC	STC	Comments
Standard EPS Fence	0.7–0.8	26–30	Moderate isolation; suitable for residential use.
Composite Panels	0.6–0.7	~26	Blocks ~98% direct sound but limited mass.
Concrete Wall	<0.1	38–45	Excellent isolation but heavy, costly, and labor-intensive.
Royal Foam Multi-Layer System	0.7–0.9	35–40+	Comparable to masonry; lighter, easier, and cost-efficient.

6. Performance Assessment

- NRC: Maintains 0.7–0.9 due to EPS absorption and polyurethane damping.
- STC: Expected 35–38; up to 40+ with optimized installation (sealed joints, 8 ft height).
- Insertion Loss: 20–30 dB, reducing external traffic and speech noise to indistinct murmurs.

These results align with predictions from the Mass Law (6 dB per mass doubling) and field-tested data on barriers published by FHWA and ASTM standards.

7. Competitive Advantages

- Matches or exceeds masonry-level acoustic performance with lower cost and easier installation.
- Lightweight construction reduces logistics and foundation requirements.
- Greater aesthetic flexibility (faux stone, faux brick, faux wood, stucco finishes).
- High durability: weather-resistant, graffiti-resistant, and fade-resistant.
- Long-term cost efficiency: no maintenance required.



## 8. Design Recommendations

1. Use 8 ft height in high-noise areas to block line-of-sight transmission.
2. Seal joints and foundations to prevent acoustic leakage.
3. Increase thickness of polyurethane or stucco on noise-facing sides for added mass.
4. Employ angled or curved sections to reduce diffraction losses.
5. Combine with landscaping for an additional 2–3 dB of attenuation (FHWA, 2011).

## 9. Conclusion

Royal Foam's patented multi-layer fence system delivers STC 35–40+ and NRC 0.7–0.9, placing it in the same category as concrete barriers while maintaining advantages of light weight, design flexibility, and cost efficiency. By leveraging Mass Law principles and Mass–Spring–Mass design, Royal Foam fences establish themselves as a best-in-class acoustic, structural, and architectural solution.

### References:

- Beranek, L. (1954). 'Acoustics'. McGraw-Hill.
- Cremer, L. (1948). 'Theory of Sound Transmission Through Walls'.
- ASTM C423 – Standard Test Method for Sound Absorption.
- ASTM E90 / E413 – Standard Test Method and Classification for Sound Transmission.
- FHWA Highway Noise Barrier Design Handbook (2011).

# Technical documentation

## *Polyurea Hardcoat*

### What is Polyurea?

Polyurea is a chemically-developed polymer coating stronger than most commonly used outdoor protective coatings, reaching a 60 on the Shore D Hardness Scale\*. Polyurea does this by bonding at a molecular level with the surface it has been applied to, such as metal, fiberglass, concrete, plastic, or wood. As Polyurea is most typically applied by 'spraying' the finish onto a structure, there is maximum flexibility and bends or angles in the product have no effect.

Polyurea can protect various surfaces from physical or chemical damage and can strengthen structure and improve outward appearance. Among the many benefits are its highly flexible and water-resistant properties, as well as an incredibly quick setting time. Polyurea can be used to protect outdoor or indoor wares that are prone to chemical or physical damage. Most commonly for Royal Foam, it has been utilized to protect our foam and metal letters and models. Like any other coating, colors can be customized to create the visual effect you desire.

### Polyurea protects against:

- High surface temperatures in direct sunlight
- Sharp edges
- Abrasion, scratches, and impact damage from climbing on or transporting
- Water, chemical, and fire damage
- UV Light
- Rust and corrosion

Due to the protective effect of Polyurea, the coating has a slightly bumpy texture (like an orange peel) that can be made rougher or smoother according to the desired finish. It will not be noticeable if viewed from a distance, but if a perfectly flat finish is desired for a cleaner, close-up look, this may not be the option for you.

# Polyurea FAQs:

## How much weight will it add?

There is a small extra weight but negligible in all cases that we are aware of.

## How much more time will it add to my project?

Polyurea is sprayed on quickly and dries faster than almost all other coatings or paint. It might be the quickest overall option to completing your project.

## Does the Polyurea hardcoat withstand temperature extremes?

The material is rated for use in temperatures from subzero cold to 250°F heat.

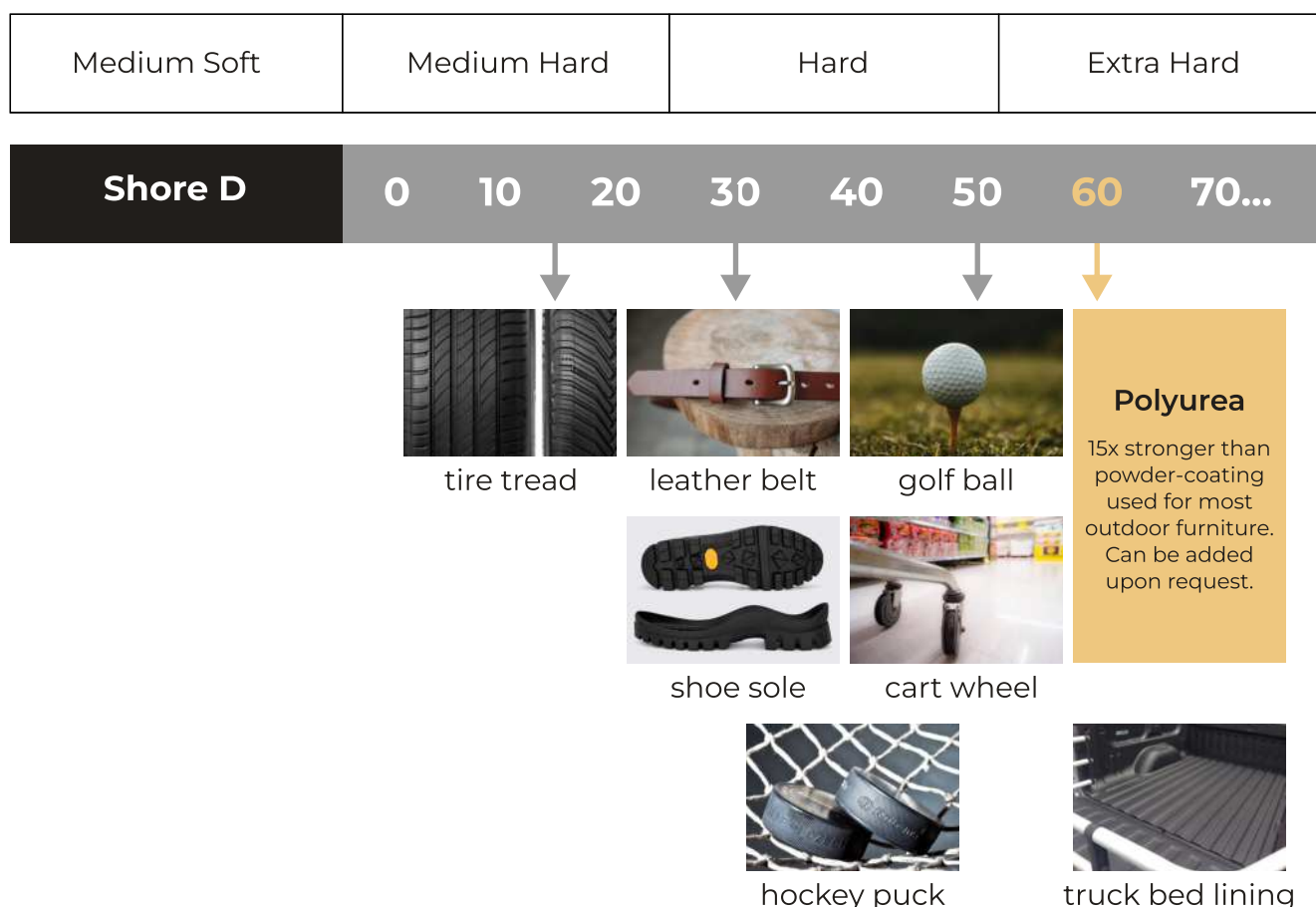
## Is Polyurea environmentally friendly?

Polyurea uses no VOCs or CFCs. Additionally, it is approved and certified for use in food preparation and potable (drinking) water systems.

## How hard is our Polyurea Hardcoat finish?

### according to the Shore Hardness Scale

The Shore D Hardness Scale measures the hardness of hard rubbers, semi-rigid plastics and hard plastics. A high number means a large hardness.



*\*The Shore Hardness Scale is determined by a material's resistance to a test needle of various points and angles. For example, a material on the Shore A scale can withstand a needle with a blunted point with varying depths of penetration. A material on the Shore D scale can withstand a pointed needle that narrows at a 30° angle with varying depths of penetration.*



# *20 Year limited warranty: faux stone & faux brick*

Royal Foam US LLC (Royal Foam) Faux Stone, Faux Rock and Faux Brick Products (the "Products") are manufactured in accordance with high standards and tight quality controls. Royal Foam Products will not rust or corrode because the panels are made of polyurethane.

## **What Does This Warranty Cover?**

Royal Foam warrants to you, the owner of the property at the time the Products were purchased, that the Products are free from defects in material and workmanship in the course of manufacturing if installed according to Royal Foam's Installation Guide and maintained according to Royal Foam's Use and Care document . A manufacturing defect shall only constitute the following: flakes, peels, or deterioration or Product contraction greater than 0.07% of the original size of the Product.

## **How Long Does The Coverage Last?**

This Limited Warranty lasts for 20 years from the original purchase date, prorated as outlined in the Warranty Coverage Schedule below. This Limited Warranty is limited to the original Royal Foam purchaser and is nontransferable to any subsequent property owner.

## **What Will We Do?**

You must notify us in accordance with the notice requirements specified below, and Royal Foam will investigate and determine, in its sole discretion, whether you have a valid claim. If Royal Foam, in its sole discretion, determines that you have a valid warranty claim, Royal Foam will undertake the following if applicable to your claim:

**If Royal Foam determines that there was a manufacturing defect, in its discretion, Royal Foam will either:**

- 1) Provide paint, caulking, and sealant as it may determine will be adequate to repair the portion of the Product related to the Defect, or
- 2) replace the portion related to the Defect, or
- 3) refund the purchase price for the portion related to the Defect, prorated as outlined in the Warranty Coverage Schedule below.

Our obligations under this Warranty will in no event exceed the purchase price of the portion of the Products found to be defective. Any additional costs and expenses beyond these amounts are your responsibility. Labor costs are not covered.

## **This Warranty Does Not Cover?**

- Damage of any kind resulting from faulty or improper use, application, vandalism, abuse or installation of the Product Improper installation
- Damage resulting from settlement of the building, movement in foundation or walls, or other failures of the structure
- Fading due to normal weathering
- Claims that may have been caused by failure to perform the recommended annual preventative maintenance as specified in the Royal Foam Use and Care document found on [www.royalfoam.us](http://www.royalfoam.us)

- Surface discoloration due to air pollution, exposure to harmful chemicals (including harmful cleaning compounds and pesticides), efflorescence, oxidation, or normal weathering of the surface Airborne stains, mold and mildew accumulation
- Expansion or contraction of the Products due to extreme environmental conditions
- Installing interior Products outdoors voids the warranty
- Labor or installation costs
- Damage incurred to the Products during shipment to you
- Damage incurred during your storage of the Products prior to installation
- Damage from fire, fumes, vapors, animals or birds of any kind
- Lightning, hurricane, tornado, windstorm, earthquake, flood, water damage or other events
- Unforeseeable natural events, disasters or acts of God
- Product discoloration resulting from unpainted polyurethane exposed to sunlight
- Impact of foreign objects
- Warping or distortion of the Product due to exposure to excessive heat sources (e.g., barbecue grills) or exposure to unusual or excessive reflective heat sources (e.g., skylight or window reflection, roofing materials, pools, decks, blacktop, or concrete materials)
- Product that has been painted or whose surface has been altered in any way without written authorization from Royal Foam

## Other Limitations

1. Due to normal weathering or changes in manufacturing, replacement Products may differ in gloss and color from Products originally installed on the property.
2. We reserve the right to discontinue or change any design or color of any of our Products at any time and without notice or liability. If, for any reason, Products of the type originally installed are no longer available through Royal Foam at the time you make a warranty claim, we may substitute another product determined by us to be of comparable quality and price.
3. There are no warranties on these Products other than as set forth in this Warranty. We are not liable to you for a breach of any other written or oral express warranties, such as those, if any, given to you by, salesmen, dealers, contractors, applicators, or distributors of the Products.
4. We exclude and are not responsible for any consequential or incidental damages arising out of any breach of this express warranty, or any other oral, written or implied warranty that may apply to your purchase, as it relates to our products. This is your exclusive warranty and is in lieu of all other warranties, express or implied, including but not limited to implied warranties of merchantability and fitness for a particular purpose.
5. We exclude and are not responsible for any consequential or incidental damages from Products installed too close to a heat source or Products that are installed in an area where the Products may come in contact with flames or embers. It is the owner's sole responsibility to follow the installation guide.

## How Do You Submit A Warranty Claim?

To initiate a claim, you should contact our warranty services department at (904) 345-5400 to receive a warranty claim form or download the claim form from the Royal Foam website. You must submit your claim form in writing by email to us within the warranty period and within 30 days after the Defect was discovered or should have been



discovered by you. Royal Foam in most cases will require specific information from you the purchaser to include, but not limited to: Photos and pictures, samples and measurements so that Royal Foam can properly evaluate the claim. Failure of Purchaser to provide any requested photos, pictures, samples, measurements, or other necessary information could result in the claim being delayed or denied.

**Warranty Coverage Schedule**

If Royal Foam determines in its sole discretion that the purchaser shall receive replacement Products or a refund for the portion of the Product related to the defect, the Proration schedule below shall apply: refund amount will be provided according to the schedule below.

Years from purchase date	Royal Foam’s coverage	Purchaser's responsibility
0-1 Year	95%	5%
1 Year and 1 Day to 2 Years	50%	50%
2 Years and 1 Day to 3 Years	40%	60%
3 Years and 1 Day to 4 Years	30%	70%
4 Years and 1 Day to 5 Years	25%	75%
5 Years and 1 Day to 7 Years	20%	80%
7 Years and 1 Day to 9 Years	15%	85%
9 Years and 1 Day to 12 Years	10%	90%
12 Years and 1 Day to 20 Years	5%	95%

**Warranty Dispute Resolution**

Any dispute arising out of or related to this Warranty shall be resolved only by binding arbitration in Jacksonville FL Duval County Courthouse.

*Safety & Best Practices for Your Royal Foam Stucco Fence*

A stucco fence excels in majesty and security, turning your outdoor space into an asylum of both beauty and protection. Its textured surface is put together with refined stone-like details, creating an intimate, harmonious accent around your home, offering steadfast strength and evolving peace of mind. Crafted from high-quality polyurethane, the panels resist corrosion, rust, and everyday wear, combining timeless design with resilient force.

# *Installation & Safety Guidelines*

## **Secure and Code-Compliant Setup**

Ensure each panel is firmly anchored according to Royal Foam's professional installation instructions. Proper alignment and anchoring solidify structural integrity, keeping your stucco fence both safe and delicate.

## **Safe Handling and Placement**

Meanwhile, being lightweight but sturdy, the panels are easy to maneuver. The following point is worth noting: having two people handle installation reduces the risk of drops or chipping and ensures precise placement. Keep panels away from intense heat sources such as grills, reflective surfaces, or direct sunlight to avoid warping.

## **Stability and Stress Avoidance**

Install panels on level ground whenever possible. If placing on uneven terrain, avoid stepping on the panels to maintain visual harmony and protect edges from undue strain or damage.

## **Routine Inspection & Maintenance**

Systematically inspect your Royal Foam stucco fence for minor imperfections. Early attention to small chips or surface abrasions helps preserve both aesthetic value and structural durability. Clean gently with mild care products and avoid harsh chemicals or aggressive cleaners.

## **Weather-Ready Reliability**

The fence is engineered to withstand wind, fire risk, and other environmental stressors. Non-combustible and impact-resistant, it offers superior safety compared to traditional wood fencing—ideal for homes in challenging climates. Even during extreme conditions, the fence is designed to retain its form and style.

## **Long-Term Assurance**

Your investment is protected under a 20-year limited warranty covering manufacturing defects, provided installation and care guidelines are attached. This ongoing protection ensures that your Royal Foam stucco fence continues to deliver style, harmony, and reliable protection for generations to come.

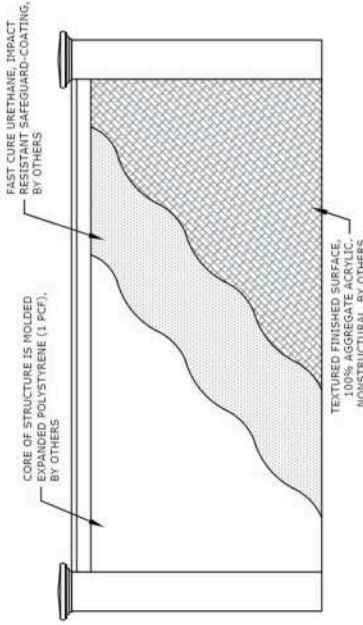
By embracing these best practices, a stucco fence becomes more than a boundary. It is a lasting expression of privacy, coziness, and architectural refinement—an ingenious solution that enhances daily life while standing as a symbol of security, trust, and permanence.



# 6FT DECORATIVE FOAM PANEL FENCE ON STEEL POSTS

RATED FOR WIND SPEEDS UP TO 175 MPH

NONSTRUCTURAL, DECORATIVE BARRIER, FOR INSTALLATION AT GRADE  
THIS DRAWING IS A NON-SITE-SPECIFIC PERFORMANCE EVALUATION. A DESIGN PROFESSIONAL SHALL BE RESPONSIBLE FOR CERTIFYING THE APPLICATION OF THIS INFORMATION TO ANY SITE-SPECIFIC LOCATION.



1 GENERAL FENCE LAYOUT  
1 NOT TO SCALE

THIS IS A NON-SITE-SPECIFIC PERFORMANCE EVALUATION. A DESIGN PROFESSIONAL SHALL BE RESPONSIBLE FOR CERTIFYING THE APPLICATION OF THIS INFORMATION TO ANY SITE-SPECIFIC LOCATION. NO CERTIFICATION IS OFFERED FOR USE WITHOUT A CORRESPONDING SITE SPECIFIC PLAN UNDER SEPARATE CERTIFICATION.

**2500ET OF COMMERCIAL OR RESIDENTIAL FENCING AT (1) LOCATION.**

THIS DOCUMENT IS NOT TO BE USED WITHOUT AN ORIGINAL PEN SIGNATURE & RAISED SEAL OR ELECTRONIC SIGNATURE MEETING ALL DISCLAIMERS SET FORTH HEREIN. RUBBED PENCIL COPIES ARE NOT PERMITTED FOR USE IN ANY WAY.

**FOOTING NOTES:**

1. IN EXPOSURES 'C' & 'D' INSIDE & OUTSIDE THE FLORIDA HIGH VELOCITY HURRICANE ZONE (HVHZ, DADE & BROWARD COUNTIES) UP TO 115MPH VWT.
2. FOOTING DIMENSION (DIAMETER) SHALL BE EITHER THE DIAMETER OF A ROUND OR DIMENSIONS OF A SQUARE FOOTING.
3. FOOTING DESIGNED USING LIMITING CRITERIA IN FBC / IBC CHAPTER 2328 INSIDE THE FL HVHZ AND OUTSIDE HVHZ FOR USE OUTSIDE HVHZ.
4. EXPOSURE 'C' AND 'D' CONDITIONS. THE PRODUCT MAY LIST BUT STAY IN TACT IN SATURATED SOIL AT PEAK WINDS AND IS STILL CONSIDERED PROPERLY DESIGNED.
5. FOR FENCES WITH CONCRETE FOOTINGS EMBEDDED INTO SOIL, DURING PERIODS OF HIGH WINDS AND SATURATED SOILS AND IS STILL CONSIDERED PROPERLY DESIGNED.

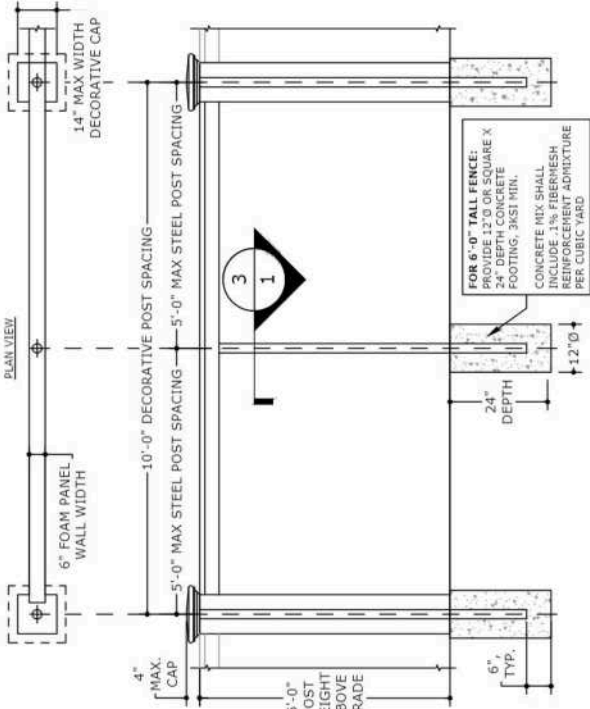
**DESIGN CRITERIA:**

CURRENT STATE BUILDING CODE: RESIDENTIAL CODE (2018 & 2021)  
ASCE 7-22 LOAD COMBINATIONS

1. WIND LOADING DESIGN CRITERIA
- 1.1. METEOROLOGICAL
- 1.2. ULTIMATE WIND SPEED
- 1.3. WIND CATEGORY
- 1.4. WIND EXPOSURE FACTOR
- 1.5. DIRECTIONALITY/OTHER FACTORS
- 1.6. WIND PRESSURE
- 1.7. WIND UPLIFT DESIGN
- 1.8. RESULTANT DESIGN WIND LOADING
- 1.9. PER CHAPTER 16.6.2.1 ALL FENCES UP TO 6'-0" IN HEIGHT MAY BE DESIGNED FOR 115 MPH INSIDE & OUTSIDE THE HVHZ.

**DESIGN CODES, AND CALCULATIONS**

1. ALLOWABLE DESIGN PRESSURES UTILIZED IN THIS DOCUMENT HAVE BEEN BASED ON THE FOLLOWING ASSUMPTIONS:
  - 1.1. STANDARDS STATED HEREIN USING ASCE 7-16 ALLOWABLE STRESS DESIGN METHODOLOGY WITH THE CRITERIA AS OUTLINED HEREIN.
  - 1.2. DISCREPANCY TO RESOLVE APPROPRIATE CRITERIA TO BE USED.
  - 1.3. THE DRAWING SET IS PREPARED AS A SITE SPECIFIC DESIGN.
  - 1.4. TYPICAL FIELD CONDITIONS HAVE BEEN ASSUMED.
  - 1.5. THE DESIGN OF THIS SYSTEM.
2. ANY EXISTING MOST STRUCTURE MUST BE CAPABLE OF SUPPORTING



2 STRUCTURAL SECTION FOR FENCE  
1 NOT TO SCALE

**FOUNDATIONS, CONCRETE, AND REINFORCEMENT**

1. CONCRETE UTILITIES SHALL BE DESIGNED TO REACH A COMPRESSION RATIO OF 4.0.
2. ALL EXISTING UTILITIES SHALL BE PROTECTED AND NOT REMOVED.
3. ALL EXISTING UTILITIES SHALL BE PROTECTED AND NOT REMOVED.
4. ALL EXISTING UTILITIES SHALL BE PROTECTED AND NOT REMOVED.
5. ALL EXISTING UTILITIES SHALL BE PROTECTED AND NOT REMOVED.
6. ALL EXISTING UTILITIES SHALL BE PROTECTED AND NOT REMOVED.
7. ALL EXISTING UTILITIES SHALL BE PROTECTED AND NOT REMOVED.
8. ALL EXISTING UTILITIES SHALL BE PROTECTED AND NOT REMOVED.
9. ALL EXISTING UTILITIES SHALL BE PROTECTED AND NOT REMOVED.
10. ALL EXISTING UTILITIES SHALL BE PROTECTED AND NOT REMOVED.

**GENERAL NOTES & DISCLAIMERS**

1. THIS DOCUMENT IS A NON-SITE-SPECIFIC PERFORMANCE EVALUATION. A DESIGN PROFESSIONAL SHALL BE RESPONSIBLE FOR CERTIFYING THE APPLICATION OF THIS INFORMATION TO ANY SITE-SPECIFIC LOCATION.
2. THIS DOCUMENT IS A NON-SITE-SPECIFIC PERFORMANCE EVALUATION. A DESIGN PROFESSIONAL SHALL BE RESPONSIBLE FOR CERTIFYING THE APPLICATION OF THIS INFORMATION TO ANY SITE-SPECIFIC LOCATION.
3. THIS DOCUMENT IS A NON-SITE-SPECIFIC PERFORMANCE EVALUATION. A DESIGN PROFESSIONAL SHALL BE RESPONSIBLE FOR CERTIFYING THE APPLICATION OF THIS INFORMATION TO ANY SITE-SPECIFIC LOCATION.
4. THIS DOCUMENT IS A NON-SITE-SPECIFIC PERFORMANCE EVALUATION. A DESIGN PROFESSIONAL SHALL BE RESPONSIBLE FOR CERTIFYING THE APPLICATION OF THIS INFORMATION TO ANY SITE-SPECIFIC LOCATION.
5. THIS DOCUMENT IS A NON-SITE-SPECIFIC PERFORMANCE EVALUATION. A DESIGN PROFESSIONAL SHALL BE RESPONSIBLE FOR CERTIFYING THE APPLICATION OF THIS INFORMATION TO ANY SITE-SPECIFIC LOCATION.
6. THIS DOCUMENT IS A NON-SITE-SPECIFIC PERFORMANCE EVALUATION. A DESIGN PROFESSIONAL SHALL BE RESPONSIBLE FOR CERTIFYING THE APPLICATION OF THIS INFORMATION TO ANY SITE-SPECIFIC LOCATION.
7. THIS DOCUMENT IS A NON-SITE-SPECIFIC PERFORMANCE EVALUATION. A DESIGN PROFESSIONAL SHALL BE RESPONSIBLE FOR CERTIFYING THE APPLICATION OF THIS INFORMATION TO ANY SITE-SPECIFIC LOCATION.
8. THIS DOCUMENT IS A NON-SITE-SPECIFIC PERFORMANCE EVALUATION. A DESIGN PROFESSIONAL SHALL BE RESPONSIBLE FOR CERTIFYING THE APPLICATION OF THIS INFORMATION TO ANY SITE-SPECIFIC LOCATION.
9. THIS DOCUMENT IS A NON-SITE-SPECIFIC PERFORMANCE EVALUATION. A DESIGN PROFESSIONAL SHALL BE RESPONSIBLE FOR CERTIFYING THE APPLICATION OF THIS INFORMATION TO ANY SITE-SPECIFIC LOCATION.
10. THIS DOCUMENT IS A NON-SITE-SPECIFIC PERFORMANCE EVALUATION. A DESIGN PROFESSIONAL SHALL BE RESPONSIBLE FOR CERTIFYING THE APPLICATION OF THIS INFORMATION TO ANY SITE-SPECIFIC LOCATION.

3 FENCE POST ASSEMBLY  
1 NOT TO SCALE

**REMARKS**

THIS DOCUMENT IS THE PROPERTY OF THE ENGINEER. IT IS TO BE USED ONLY FOR THE PROJECT AND SITE SPECIFICALLY IDENTIFIED HEREIN. IT IS NOT TO BE REPRODUCED OR TRANSMITTED IN ANY FORM OR BY ANY MEANS, ELECTRONIC OR MECHANICAL, INCLUDING PHOTOCOPYING, RECORDING, OR BY ANY INFORMATION STORAGE AND RETRIEVAL SYSTEM, WITHOUT THE WRITTEN PERMISSION OF THE ENGINEER. ANY UNAUTHORIZED USE OR REPRODUCTION OF THIS DOCUMENT IS PROHIBITED AND WILL BE PROSECUTED TO THE FULL EXTENT OF THE LAW.

25-85089

SCALE: UNLESS NOTED

**ENGINEERING EXPRESS**  
POSTAL ADDRESS:  
2234 NORTH FEDERAL HWY #7664  
BOCA RATON, FL 33431  
ENGINEERINGEXPRESS.COM

ROYAL FOAM US, LLC DBA  
"GREEN WALL CONSTRUCTION"  
JACKSONVILLE, FL 32219  
PERFORMANCE EVALUATION  
ASCE 7-22 / IBC 2021

DATE	CHKD	DATE	CHKD
5/26/25	ACB	5/26/25	ACB
5/26/25	ACB	5/26/25	ACB
5/26/25	ACB	5/26/25	ACB
5/26/25	ACB	5/26/25	ACB
5/26/25	ACB	5/26/25	ACB
5/26/25	ACB	5/26/25	ACB
5/26/25	ACB	5/26/25	ACB
5/26/25	ACB	5/26/25	ACB
5/26/25	ACB	5/26/25	ACB

**REMARKS**

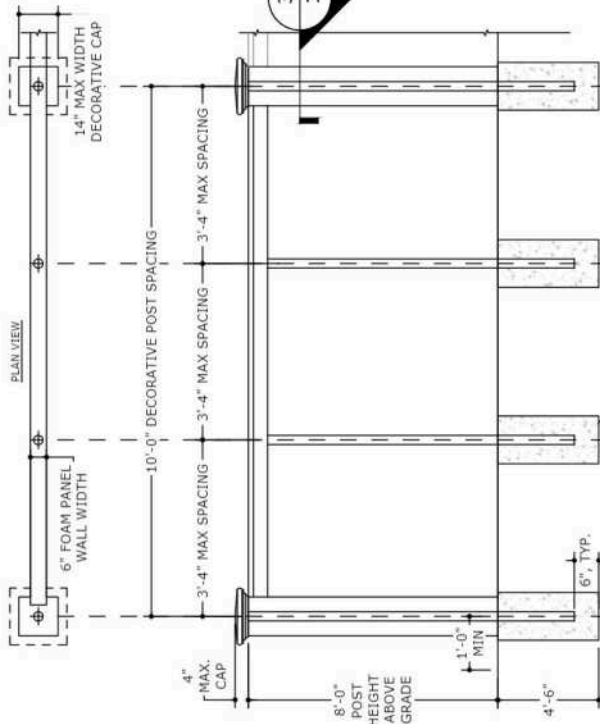
THIS DOCUMENT IS THE PROPERTY OF THE ENGINEER. IT IS TO BE USED ONLY FOR THE PROJECT AND SITE SPECIFICALLY IDENTIFIED HEREIN. IT IS NOT TO BE REPRODUCED OR TRANSMITTED IN ANY FORM OR BY ANY MEANS, ELECTRONIC OR MECHANICAL, INCLUDING PHOTOCOPYING, RECORDING, OR BY ANY INFORMATION STORAGE AND RETRIEVAL SYSTEM, WITHOUT THE WRITTEN PERMISSION OF THE ENGINEER. ANY UNAUTHORIZED USE OR REPRODUCTION OF THIS DOCUMENT IS PROHIBITED AND WILL BE PROSECUTED TO THE FULL EXTENT OF THE LAW.



**RATED FOR WIND SPEEDS UP TO 140 MPH**

THIS DRAWING IS A NON-SITE-SPECIFIC PERFORMANCE EVALUATION. A DESIGN PROFESSIONAL SHALL BE RESPONSIBLE FOR CERTIFYING THE APPLICATION OF THIS INFORMATION TO ANY SITE-SPECIFIC LOCATION.

SPACE RESERVED FOR  
CERTIFYING ENGINEER'S  
DIGITAL OR PHYSICAL SEAL  
& DATE OF CERTIFICATION



## FLUORINATION

FLUORINATION

1. **FOOTING NOTES:**
  - a. VALID FOR USE IN EXPOSURES 'C' & 'D' INSIDE & OUTSIDE THE FLORIDA HIGH VELOCITY HURRICANE ZONE (HVHZ, DADE & BROWARD COUNTIES) UP TO 115MPH
2. FOOTING DIMENSION (DIAMETER) SHALL BE EITHER THE DIAMETER OF A ROUND OR DIMENSIONS OF A SQUARE FOOTING.
3. FOOTING DESIGNED USING LIMITING CRITERIA IN IBC / IBC CHAPTER 1828 INSIDE THE FL HVHZ AND IN CONSIDERED VALID FOR USE OUTSIDE HVHZ IN EXPOSURE 'C' AND 'D' CONDITIONS. THE PRODUCT MAY LIST BUT STAY IN TACT IN SATURATED SOIL AT PEAK WINDS AND IS STILL CONSIDERED PROPERLY DESIGNED. FOOTING SPECIFICATIONS ASSUME 5' MAX FENCE POST SPAN.
4. FENCES WITH CONCRETE FOOTINGS EMBEDDED INTO SOIL DESIGN IS SUCH THAT FENCES MAY LAST DURING PERIODS OF HIGH WIND AND SATURATED SOILS AND IS STILL CONSIDERED PROPERLY DESIGNED.

## SECTION

SECTION

## SECTION

SECTION

[illegible][illegible]



# *Nationwide Excellence: Royal Foam Stucco Wall Fence*

At Royal Foam, we are proudly serving clients nationwide. Each Stucco Wall Fence panel is engineered with precision and care, ensuring every piece meets the highest standards of quality, durability, and design.

## **Premium Materials, Superior Performance**

Our panels are built on a robust EIFS (Exterior Insulation and Finish System) foundation, carefully designed to balance strength with elegance:

- **Core Structure:** Molded expanded polystyrene (EPS) foam, providing lightweight durability and natural insulation.
- **Protective Coating:** Fast-curing urethane coating that ensures resilience against daily wear, impacts, and environmental stressors.
- **Textured Finish:** A 100% aggregated acrylic surface, delivering timeless stucco beauty with minimal maintenance.

This advanced composition creates a fence that not only enhances the charm of your property but also preserves its strength and elegance for ages.

## **Nationwide Reach, Local Expertise**

Royal Foam's unique benefit lies in our dedicated presence in all 50 states. In every state, a qualified Royal Foam representative is available to guide you through each step of your fencing project.

## **Your local expert can assist with:**

- **Consultation & Planning:** Helping you choose the right design, finish, and height to match your home's style and privacy needs.
- **Site Evaluation:** Offering guidance on terrain conditions, placement options, and installation requirements.
- **Installation Support:** Ensuring panels are set correctly for maximum stability, safety, and aesthetic harmony.
- **Ongoing Care & Maintenance Advice:** Providing tips to preserve beauty and performance with minimal upkeep.

**Direct Point of Contact:** Offering personalized service, faster response times, and tailored solutions specific to your region's climate and conditions.

## *Why It Matters: Local Expertise in Every State*

- Immediate access to an experienced representative who understands your region.
- Faster project planning and delivery, without delays.
- On-site insights for smooth installation and lasting performance.
- Personalized guidance, ensuring your fence matches your lifestyle and property.
- The assurance of nationwide resources, combined with the convenience of local care.

With local support in every state, you receive the benefits of a nationwide company paired with the comfort of local expertise — ensuring your project runs smoothly, efficiently, and with a high-touch service.

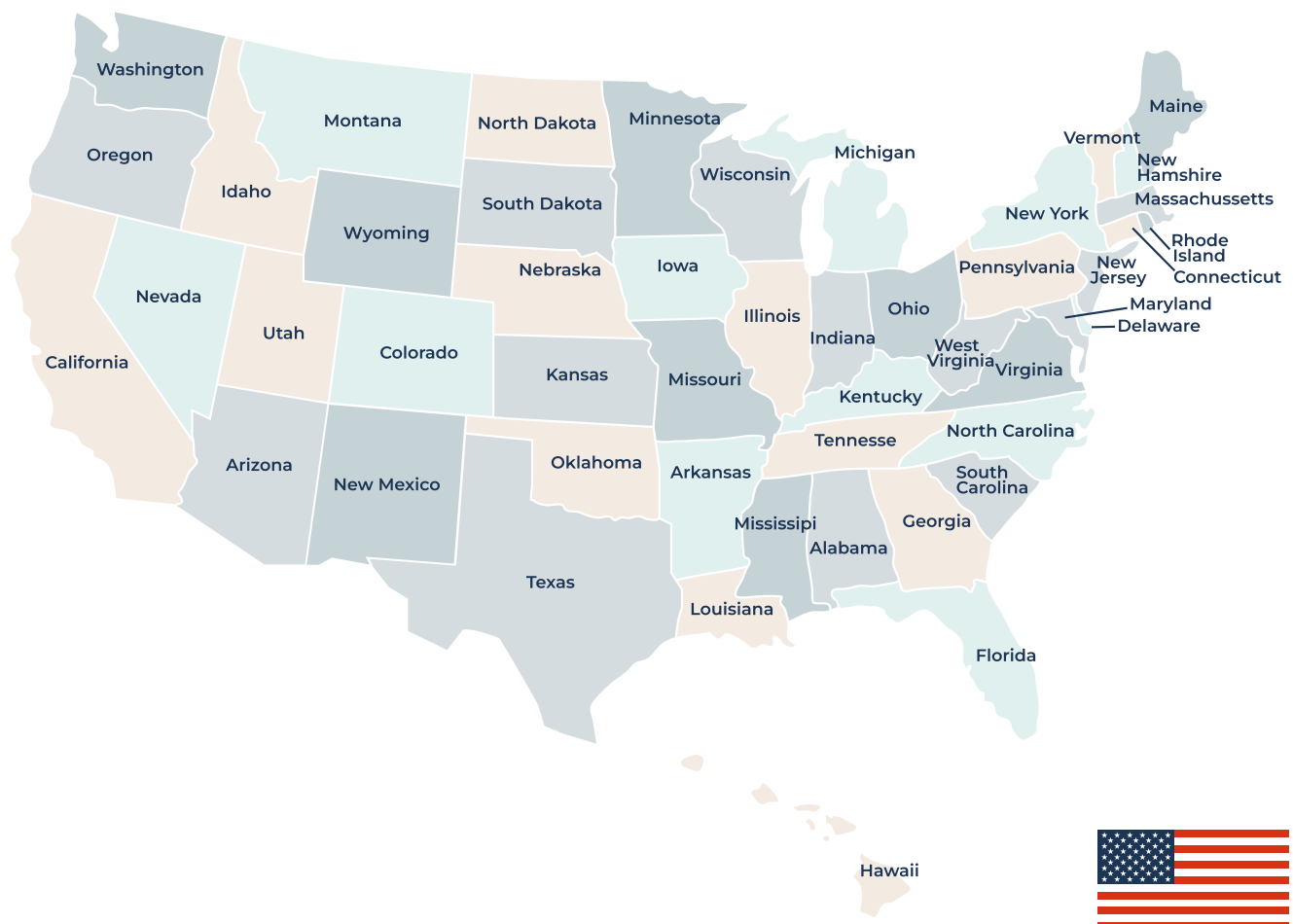
### Aesthetic and Practical Benefits

- **Elegant Design:** The fusion of stucco and faux stone textures creates a refined, versatile look that complements both modern and traditional architecture.
- **Durability:** Resistant to cracking, peeling, warping, rusting, and rotting—designed to endure.
- **Weather Resistance:** Withstands wind, moisture, and UV exposure, maintaining beauty across seasons.
- **Noise Reduction:** Panels act as an effective sound barrier, creating a calmer, more private environment.
- **Installation Flexibility:** Adapts seamlessly to ground contours, even in challenging terrains or tight property lines.

### Commitment to Quality

Choosing Royal Foam means inclining towards a fence that embodies both aesthetic refinement and functional strength. With nationwide shipping, local representatives in all 50 states, and a dedication to excellence, we ensure every client enjoys a composed, stable, and rewarding experience.

With Royal Foam, your fence becomes more than a boundary—it becomes a statement of privacy, protection, and eternal exquisiteness.







ROYAL FOAM  
*Factory*